

City of Florence

Annual Report for 2017

General Permit for Phase II

**Small Municipal
Separate Storm Sewer Systems (MS4)**

May 31, 2018

Prepared by:

WLC *civil engineers*
land surveyors
White, Lynn, Collins & Associates, Inc.

219 West Alabama Street • Florence, Alabama 35630
Telephone 256.766.1051 • Facsimile 256.766.1201

City of Florence

Annual Report for 2017

General Permit for Phase II

Small Municipal Separate Storm Sewer Systems (MS4)

NPDES Permit No. ALR04008

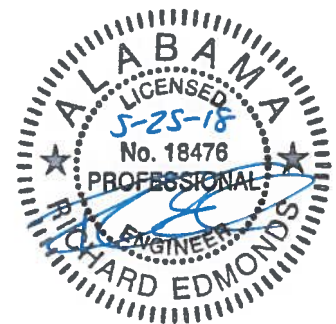
May 31, 2018

Prepared for the City of Florence

By: White, Lynn, Collins and Associates, Inc.



Richard O. Edmonds, P.E.



Annual Report for 2017-2018
City of Florence MS4 NPDES Permit ALR040008

CERTIFICATION

I certify under penalty of law that this document and all attachments were prepared under my direction or supervision in accordance with a system designed to assure that qualified personnel properly gathered and evaluated the information submitted. Based on my inquiry of the person or persons who manage the system, or those persons directly responsible for gathering the information submitted is, to the best of my knowledge and belief, true, accurate, and complete. I am aware that there are significant penalties for submitting false information, including the possibility of fine and imprisonment for knowing violations.



Signature—Responsible Official

5-25-18

Date

Steve Holt

Print Name

Mayor

Title

City of Florence, Alabama
NPDES (MS4) 2017 Annual Report
Permit No. ALR040008
May 31, 2018

This report documents the activity related to each of the 6 Minimum Control Measures, including the BMP and rational statement, as required by the City of Florence NPDES Stormwater (MS4) permit.

The appendix includes documentation of the action items for BMP efforts made by the City to comply with the permit and the SWMP.

1. Minimum Control Measure No. 1 – Public Education and Outreach

Problems Addressed: The main source of pollution addressed by public education and outreach is trash, fertilizer, lawn chemicals, litter, soil disturbances, fuel storage and individual oil changes.

- BMP 1 – Distribute education materials & conduct outreach activities
- BMP 2 – Soil Erosion Control during construction

Rationale for BMPs: This control measure addresses the problems most common to residences and businesses in this area. Correcting these problems will go a long way toward cleaning up the waters in this area. The majority of soil erosion and introduction of silt into the stormwater system is due to construction activities which disturb the soil. By placing erosion control requirements on contractors and developers, soil erosion can be controlled and the waters can be kept cleaner. Requirements are outlined in the subdivision regulations and the SWMP.

Ongoing Activities:

The following activities were conducted by the City of Florence to implement these BMP measures:

- 1) The City informed individuals and households about the steps they can take to reduce stormwater pollution by distributing information through the utility department mail-outs. A Stormwater Pollution Article is published annually in the Florence Energy Brochure and distributed in the month of April. Citizens are advised to contact the City Engineering Department if they notice any issues or need more information. This outreach is planned to reach approximately 40,000 people per year. (See Appendix for copy of article published and distributed in April 2017 and April 2018.)

- 2) The City of Florence website www.florenceal.org includes a link to the City's NPDES Program on the City Engineering Department's section. This link directs citizens to ordinances and permits related to stormwater management. In October 2014, the City purchased the video "Illicit Discharge Detection and Elimination A Grate Concern" and placed a link to it on the City's website. (See Appendix for screenshots of website pages showing the links to these documents.)
- 3) The NPDES Permit has been discussed during the Green Committee meetings. The Green Committee was created in 2009 to address environmental issues. Presentations and activities to educate the public and increase awareness were planned and executed. The City's also encourages residential and commercial recycling by providing recycling containers for City residents and businesses. The website for recycling information is www.florenceal.org/Public_Works/Recycling/index.html. (See Appendix for a list of Stormwater Education events and activities that were conducted in 2017 and 2018 and a screenshot of the City's recycling website.)
- 4) The City of Florence is an active partner with the "Keep the Shoals Beautiful" organization that is dedicated to promoting a cleaner, healthier and safer community and to protecting our natural resources through education, enforcement and action. The City also participates in State Boards including Keep Alabama Beautiful, Alabama Recycling Coalition, Southeast Recycling Development Council, and Solid Waste Association of Alabama to stay informed and maintain certifications.
- 5) The City Engineering Department in conjunction with the City of Florence Street Department continued the program of placing stormwater markers throughout the City on stormwater catch basins and inlets to remind the public that the drainage system flows to waterways. (See Appendix for a picture of the markers that are used.)
- 6) The City Engineering Department continues to require contractors and developers on City projects to place special stamped access covers on catch basins and junction boxes. These covers read "Dump No Waste" and "Drains to River" and serve to warn the public that the drainage system flows to waterways. New manhole covers were placed on the Hermitage Drive Bridge Southwest side and the Hermitage Drive Sidewalk Project. The City's Engineering department encourages developers to have their contractors do the same thing through Subdivision Regulations. (See Appendix for excerpt from City's Subdivision Regulations requiring lettering on manhole covers.)
- 7) The person responsible for the control measure and the BMPs is the City Engineer.

2. Minimum Control Measure No. 2 – Public Involvement and Participation

Problems Addressed: The problem addressed by public involvement and participation is associated mainly with littering and the general disregard for erosion and pollution problems.

- BMP 1 – Education for citizens, design professionals, contractors, planners and landscapers.
- BMP 2 -- Involve the public in clean-up activities, decision making processes, and permitting requirements.

Rationale for BMPs: The rationale for these BMPs is that as more citizens are involved in the decision making process and in clean-up activities the more they will be aware of the problems related to litter and erosion. Public involvement and participation helps to increase general awareness and concern over these issues. These activities also involve environmentally concerned individuals and help get citizens involved in reporting violations to be enforced by city officials.

Ongoing Activities:

The following activities were conducted by the City of Florence to implement these BMP measures:

- 1) The NPDES Permit has been discussed during the Green Committee meetings. Activities and clean-up days designed to involve the public in addressing pollution issues were planned and executed. (See Appendix for a list of Stormwater Education events and activities that were conducted in 2017 and 2018.)
- 2) In 2014 the City entered the TVA Valley Sustainable Communities Program initiated by TVA Economic Development. This program provides communities with a framework and structure to demonstrate the role sustainability plays in their areas. Based on an inventory of current activities and initiatives, the City of Florence qualifies at the Gold Level.
- 3) The City launched the Florence Forward Sustainable Partner Program. This program is a revamp of the Certified Green Team Partnership Program. The goal of this program is to encourage public involvement by highlighting and supporting businesses and non-profit organizations in Florence committed to green practices which include pollution prevention, waste reduction measures and recycling. Twenty-five (25) local businesses are recognized as Green Team Partners on the City's sustainability website (www.florencegoesgreen.org)

- 4) The City continues to implement an “Adopt-A-Street” program. Local individuals, organizations or businesses can adopt a street in their neighborhood by promising to keep the street litter free. The City provides the materials needed.
- 5) The City organized city wide Clean-Up Days in March 2017 and 2018. Fifteen (15) different organizations and businesses sponsored the event. Over 400 citizens and 60 organizations volunteered to participate in the event. Between both events, over 21,000 pounds of trash and litter was collected from various roadways throughout the City of Florence. (See Appendix for copy of 2017 and 2018 Clean-Up Day fliers and Rubbish Reports.)
- 6) Construction projects will not be permitted to begin work without a City permit which is the result of the site having received an ADEM permit and the City approval of the site construction BMP. (See Appendix for Ordinances and Permits related to Stormwater Management)
- 7) The person responsible for this control measure and the BMPs is the City Engineer.

3. Minimum Control Measure No. 3 – Illicit Discharge Detection and Elimination

Problems Addressed: This control measure addresses the lack of training regarding the effects of illicit discharges, understanding proper BMP measures, proper enforcement of City ordinances, illicit discharge by industrial, commercial sites and construction sites into the City stormwater system and stream contamination caused by illicit discharges.

- BMP 1 – Qualify enforcement personnel and re-certify QCI
- BMP 2 – Site inspections at industry, commercial and construction sites
- BMP 3 – Sampling and testing

Rationale for BMPs: The rationale for these BMPs is that an enforcement process is necessary to work toward eliminating the problem associated with illicit discharges. City officials need to be informed and trained regarding the hazards associated with illicit discharges and proper BMP measures. An inspection process is necessary to identify illicit discharges and enable the City of enforce the ordinances related to such discharges. Sampling and testing stormwater at the known outfalls of the City’s stormwater system will help to identify issues so further inspection and enforcement can take place.

Ongoing Activities:

The following activities were conducted by the City of Florence to implement these BMP measures:

- 1) The City has maps of the permitted area which indicate main discharge points and locations for stormwater sampling. Updates were made to the City's stormwater maps to reflect changes in city limits since the last report. Stormwater sampling and testing was performed on six locations by Southern Environmental Testing, Inc. The sampling was performed on 1/12/2018. Samples were tested for oil & grease, pH, and total suspended solids (TSS). (See Appendix for copies of test results and overall city limit map.)
- 2) Ordinances are in effect which prohibit illicit discharges and connections to the City's municipal storm sewer system. The ordinances outline an enforcement procedure. (See Appendix for copy of Illicit Discharge and Connection Ordinance.)
- 3) In October 2014 the City purchased the "Illicit Discharge Detection and Elimination A Grate Concern" video. This video is designed to help build community awareness of illicit discharge, detection and elimination. These videos have been placed on the City's web site. (See Appendix for brochure on program details.)
- 4) The City routinely inspects industrial, commercial and active construction sites. The inspections look for spills or situations that could result in spills and subsequent runoff to waters of the State. These sites are inspected monthly and after significant rain events. In 2017-2018 a total of twenty-four (24) sites were inspected on a monthly basis. (See Appendix for a list of inspections performed by City officials and a copy of the Inspection Form.)
- 5) The City receives calls from citizens who observe problems related to stormwater management. Request for services are compiled and work orders are issued to address legitimate concerns. In April 2018, two (2) citizens contacted the City Engineering Department regarding erosion control and litter issues.
- 6) The person responsible for this control measure and the BMPs is the City Engineer.

4. **Minimum Control Measure No. 4 – Construction Site Stormwater Run Off Control**

Problems Addressed: This control measure addresses the problems associated with the runoff of silt and other illicit discharges into the City stormwater system from construction sites, the lack of concern by the holder of the stormwater permit to address deficiencies in the BMP measures, and stream contamination caused by erosion of silt and/or illicit discharges.

- BMP 1 – To have all sites permitted by the City and ADEM
- BMP 2 – Provide monthly inspections
- BMP 3 – Keep run off sample results at minimum

Rationale for BMP: The rationale for these BMPs is that by requiring contractors to follow the permitting process for stormwater runoff, they will be given the proper BMP measures to follow to minimize erosion and illicit discharges. These permits also include regular inspections that will hold them accountable to the permit requirements. Sampling and testing stormwater runoff from construction sites will insure the contractor's compliance with BMP measures and determine if additional measures need to be put in place.

Ongoing Activities:

The following activities were conducted by the City of Florence to implement these BMP measures:

- 1) The City has updated their subdivision regulations to include information on the City's NPDES permit and approved an ordinance that requires erosion and sediment controls at construction sites. (See Appendix for copy of City Ordinances.) The City uses this mechanism because an ordinance is a required pre-requisite to enforcement. A copy of the ordinance is presented in the SWMP. The project construction bond includes cost for providing BMPs.
- 2) The City reviews all BMPs prior to issuing a permit for construction.
- 3) The City requires developers and owners of construction sites to report the results of their monthly inspections. Problems are addressed with the developer and contractor. The problem is corrected or the City will enforce monetary fines. No fines were necessary for this reporting year.
- 4) The person responsible for this control measure and the BMPs is the City Engineer.

5. Minimum Control Measure No. 5 – Post Construction Stormwater Management in New Development and Re-Development

Problems Addressed: This control measure addresses problems associated with soil erosion and sedimentation from construction projects that are completed but without complete soil stabilization of the site. Many developers and property owners fail to maintain erosion control measures after the contractor leaves the site.

- BMP 1 – To have all sites secured with vegetation and run off control.
BMP 2 – Post Construction Maintenance Agreements

Rationale for BMPs: The rationale for these BMPs is they will help to ensure the continuation of sediment and erosion control measures until permanent stabilization is achieved by requiring owners to provide a bond to cover the cost of replacing or establishing such measures. Owners will also be required to sign an agreement to be recorded with the property deed or plat that transfers to any new owner or operator the responsibility for post-construction maintenance.

Ongoing Activities:

The following activities were conducted by the City of Florence to implement these BMP measures:

- 1) The City requires that the BMP be a part of the construction bond amount. The construction phase of bonding is followed by a maintenance agreement which is to be recorded at the courthouse and follows with the transfer of property. Bonding is in place throughout construction and the maintenance agreements are in force until a notice of termination is issued by ADEM.
- 2) The City requires monthly inspection reports be copied to their file for review.
- 3) The City provides review of BMPs submitted by developers. These plans are approved prior to site permits being approved. If a site is non-compliant, the City notifies the developer. If the issues are not addressed immediately, the City can issue a fine or notify ADEM for additional enforcement.
- 4) The City routinely inspects active construction sites on a monthly basis and after significant rain events. These sites are inspected for up to six months after construction is complete and the ADEM permit is terminated to insure post-construction stormwater management. Records are kept on all inspections and reviews received by or conducted by the City.

Attached is a list of sites that were inspected for stormwater compliance by City officials along with a copy of the Inspection Form used.

- 5) The person responsible for this control measure and the BMPs is the City Engineer.

6. Minimum Control Measure No. 6 – Pollution Prevention / Good Housekeeping for Municipal Operations

Problems Addressed: This control measure addresses problems associated with City maintenance personnel not being adequately trained and aware of BMP requirements and the effects of pollution. It also addresses the problems associated with polluted runoff that occurs when City owned vehicles and equipment are maintained in an uncontrolled area.

BMP 1 – Personnel Training

BMP 2 – Housed fleet maintenance and washing system

Rationale for BMPs: The rationale for these BMPs is that many of the City personnel are in a position to prevent pollution and erosion or at least observe the activities of others. By adequately training them in proper BMP requirements, it will help to ensure good housekeeping practices and pollution prevention through personal practice or notification of observed violations. Also, providing a way to separate pollutants such as oil, grease and sediment from maintenance and washing operations will help to eliminate contaminated runoff from entering the storm sewer system.

Ongoing Activities:

The following activities were conducted by the City of Florence to implement these BMP measures:

- 1) The City maintains regulations related to maintenance operations and stormwater quality to which all applicable City personnel must adhere. These regulations include educating its employees as to proper control for maintenance vehicle wash water runoff. (See Appendix for copy of regulations)
- 2) The City Engineering Department continues to maintain comprehensive documentation on all City personnel training and on all public training programs.
- 3) The City of Florence Engineering Department has two training programs it uses to educate and train City personnel in an effort to reduce polluted runoff from entering the storm sewer system. All new City employees and employees of the Street Department are scheduled to view this video and

take the associated quiz. The Florence Gas & Water/Wastewater Departments will also be using the video and employee quiz to train their employees. The videos are “Rain Check Trainer’s Guide for Stormwater Pollution Prevention for MS4s” and “Illicit Discharge Detection and Elimination Public Outreach Program”. (See Appendix for outline of the “Rain Check Trainer’s” video training program.)

- 4) One (1) employee, David Looney, with the City Engineering Department attended an ADEM Qualified Credentialed Inspector (QCI) Workshop in February of 2018. One (1) employee, Todd Sullivan, with the City Engineering Department attended the Alabama Stormwater Association Planning Group meeting in July of 2017 sponsored by ALDOT and other organizations. This meeting was held to discuss MS4 permit requirements and recent audits. (See Appendix for brochures on these events.)
- 5) The City Engineering Department works to ensure open lines of communication between all City Departments, the Mayor and the City Council concerning all the provisions of the NPDES MS4 Permit.
- 6) City personnel who open trenches or remove vegetation for construction of streets are required to provide proper erosion and siltation control.
- 7) The City of Florence Street Department maintains all storm drains throughout the City to keep them clear of debris and provide repairs as needed. Reports and pictures are submitted as the work is completed. Maintenance was performed from January 2017 through April 2018. Approximately 17,000 lbs. of debris was cleared from the storm sewer system during the 2017 reporting year. (See Appendix for Storm Drain Clean-Out Reports and Pictures.)
- 8) Fleet washing operations impact the following departments:
 - a. Gas, Water/Wastewater Department: housed facility with runoff to the city sanitary sewer system.
 - b. Street Department: Pressure washer with runoff to the storm sewer system.
 - c. Recycle Center: Hose rinse with runoff to storm sewer system.
 - d. Solid Waste Department: Housed facility with its own permit.
 - e. Electricity Department: Housed facility with drain to storm sewer system.
- 9) Chemicals and weather related materials are stored inside covered buildings.
- 10) The person responsible for this control measure and the BMPs is the City Engineer.

During 2017-18, the city plans to implement the following general BMP's.

A. Public Education and Outreach

1. Continue to inform individuals and households of stormwater pollution prevention through distribution of brochures in utility department mail outs.
2. Publish a Stormwater Pollution Article in the annual Florence Energy Brochure.
3. Maintain the section on City's website regarding the NPDES Program.
4. Continue to plan and execute stormwater education presentations, activities and clean-up days.
5. Maintain active partnership with "Keep the Shoals Beautiful" and other organizations.
6. Continue placing markers on existing catch basins and inlets around the City warning the public that the drainage system flows to waterways.
7. Continue to require contractors and developers to use specially stamped access covers on new catch basins and junction boxes to warn the public that the drainage system flows to waterways.

B. Public Involvement / Participation

1. City will hold a public hearing during the year to allow the public to express concerns and ask questions regarding the Stormwater Management Program. NPDES Permit will be discussed at the City's Green Committee Meetings.
2. Continue to plan and execute clean-up days and other related activities designed to involve the public and increase awareness.
3. Maintain the Florence Forward Program highlighting and supporting businesses that show commitment to "green" practices.
4. Continue to require construction project owners to obtain ADEM permits (if required) and incorporate BMP measures in their designs before receiving permits from the City to begin work.

C. Illicit Discharge Detention and Elimination

1. Continue to review and update as necessary the City's stormwater maps. Stormwater will be sampled and tested during the year from locations specified by the City Engineer.
2. Maintain and enforce City ordinances that are in effect prohibiting illicit discharge.
3. Continue conducting routine inspections of industrial, commercial and active construction sites.

D. Construction Site Stormwater Runoff Control

1. Maintain and enforce subdivision regulations and ordinances that require erosion and sediment control at construction sites.
2. Review all BMP designs for construction projects before issuing a permit for construction.

3. Continue to require developers and owners of construction sites to report the results of their monthly stormwater inspections. Levy fines as required and allowed by law.
 4. Maintain a file of information received by the public.
- E. Post Construction Stormwater Management in New and Redevelopment
1. Continue requiring that BMP be part of the construction bond amount. Construction will be followed by a maintenance agreement to maintain BMPs until permit is terminated.
 2. Continue to require monthly inspection reports be copied to the City for review and filing.
 3. Continue to review BMPs submitted by developers as part of their construction plans.
 4. Continue routine inspections of active construction sites. Inspections will continue for up to six months after construction and until permit is terminated.
 5. Continue to maintain records of all inspections and reviews conducted by the City.
- F. Pollution Prevention / Good Housekeeping
1. Continue providing QCI training for City inspectors and educating City employees on various stormwater pollution prevention measures.
 2. Maintain open lines of communication between all City Departments concerning the provisions of the MS4 Permit.
 3. Ensure that City personnel use proper erosion and sediment control measures when performing work that disturbs ground cover.
 4. Maintain all storm drains throughout the City and keep them repaired and cleared of debris.
 5. Maintain housed washing facilities for fleet washing operations.
 6. Ensure that all chemicals and weather related materials are stored inside a covered building.

APPENDIX

- **PUBLIC EDUCATION AND OUTREACH**
 - Stormwater Pollution Article
 - City of Florence Engineering Department Website Screenshots
 - Stormwater Education Events and Presentations
 - Storm Drainage Marker
 - Excerpt from Subdivision Regulations

- **PUBLIC INVOLVEMENT AND PARTICIPATION**
 - 2017 Clean-Up Day Flier & Rubbish Report (3/18/17)
 - 2018 Clean-Up Day Flier and Rubbish Report (3/24/18)
 - 2017 Tennessee River Litter Tournament Flyer and Billboard (9/9/17)
 - New Cigarette Butt Recycling Program Press Release (2/6/18)
 - Florence Forward Sustainability Partnership – website screenshot
 - Minimum Requirements for Construction Permitting and Erosion Control
 - Permit to Construct Site Work
 - Ordinance for Stormwater Operation and Maintenance
 - Ordinance for Erosion and Sediment Control

- **ILLICIT DISCHARGE DETECTION AND ELIMINATION**
 - City of Florence Map
 - Stormwater Runoff Sampling and Testing Results
 - Ordinance for Illicit Discharge and Connection to Stormwater System
 - List of Construction Sites Inspected by City
 - Inspection Report Form
 - Request for Services

- **POLLUTION PREVENTION/GOOD HOUSEKEEPING**
 - Regulations for Municipal Operations and Stormwater Quality
 - Rain Check Training Video Program
 - Workshop - QCI Stormwater Management Training
 - Meeting – AL Stormwater Associates Planning Group Meeting
 - Monthly Storm Drain Clean-Out Reports and Pictures

PUBLIC EDUCATION AND OUTREACH

- Stormwater Pollution Article
- City of Florence Engineering Department Website Screenshots
- Stormwater Education Events and Presentations
- Storm Drainage Marker
- Excerpt from Subdivision Regulations

Florence ENERGY

NEWS YOU CAN USE FROM FLORENCE UTILITIES

Stormwater pollution is caused by the daily activities of people everywhere. Each of us has a role in preventing pollution before it gets into our storm drainage system. See what you can do to help.



SHOALS FRONT PORCH STORYTELLING FESTIVAL

You're Invited to our Front Porch in Florence, Alabama!

Prefestival Events May 18, 7pm-9pm
May 19-20 ♦ 9am-5pm, 2017

NOTICE

FLORENCE UTILITIES WILL BE CLOSED ON
MON., MAY 29 MEMORIAL DAY
TUES., JULY 4 INDEPENDENCE DAY

florenceutilities.com

Pre-Festival EVENTS

♦ Muscle Shoals Movie Documentary
Florence-Lauderdale Public Library Conference Room
Thursday, May 18 ♦ 10am ♦ FREE ♦ Seating Limited to 75
Hollywood-produced documentary storm work-wide highlighting music history of Muscle Shoals.

♦ Kathryn Tucker Windham: The Story of a Storyteller
Florence-Lauderdale Public Library Conference Room
Thursday, May 18 ♦ 2pm ♦ FREE ♦ Seating Limited to 75

♦ An Evening with Donald Davis
Thursday Evening, May 18 ♦ 7pm-8:30pm ♦ \$10

Shoals Historical Tour

Thursday, May 18 ♦ 9am & 1pm ♦ \$25

This tour includes stops at Ivy Green, birthplace of Helen Keller; the Rosenbaum House, designed by Frank Lloyd Wright; and Tom's Wall, a Native American memorial, noted as one of the top 10 environmental arts in the U.S., and the newly-opened Indian Mound Museum.

Shoals Music Tour

Thursday, May 18 ♦ 9am & 1pm ♦ \$25

From its position alongside the Singing (Tennessee) River, the Shoals area has become a place of inspiration in the world of music. Take a journey through the hit recording capital as we visit the father of the blues, W.C. Handy's home & museum, the Alabama Music Hall of Fame, and landmarks FALFE Studios and the Muscle Shoals Sound Studio. The tour will be guided by Florence's own Walt Aldridge, known for writing numerous chart toppers, including "I've Got Her First." Walt honors the world of music inside and out and will be able to provide a one-of-a-kind insight into the Shoals' music history.

Singing River SONGWRITERS' ROUND

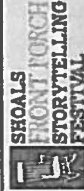
Friday Evening, May 19 ♦ 7pm-9pm ♦ Shoals Theatre ♦ \$10

Walt ALDRIDGE ♦ Kate CAMPBELL ♦ Danny LOWERY ♦ Mark NARMORE

Songs and Stories from the Civil War

Saturday Evening, May 20 ♦ 7pm-9pm ♦ Shoals Theatre ♦ \$10

Bobby Linton has performed with the musical comedy trio Three On a String, throughout the United States and Canada for 45 years. He has also produced and performed music scores for sixteen PBS films by Ken Burns - including "The Civil War", two films for The A&E network, and twenty-one films for The National Park Service. His series of recordings of authentic period music has been acclaimed by historical organizations and publications through America and Europe.



TOP TWENTY EVENTS

PO Box 662 ♦ Florence, Alabama 35631

SHOALS FRONT PORCH STORYTELLING FESTIVAL

You're Invited to our Front Porch in Florence, Alabama!

Prefestival Events May 18, 7pm-9pm
May 19-20 ♦ 9am-5pm, 2017

Music and Ollies provided on Friday and Saturday from 7pm-9pm.
Purchase storytelling tickets includes evening performances.

All other tickets \$10.

Shoals Theatre ♦ North Seminary Street

Meet our Performers



Donald DAVIS



Bill LEPP



Debra HYDOCK



Tim LOWRY



Walt ALDRIDGE



Kate CAMPBELL



Dan WHITE



Bobby HORTON

FESTIVAL TICKETS

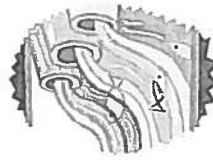
Single Day Pass - \$20 ♦ Two Day Pass - \$35

To purchase tickets, please call 256-366-5229 or visit www.theshoalsfestival.com.
For more information, contact Debbie Glavin at 256-377-3736.

Florence Energy News

STORMWATER POLLUTION

Stormwater pollution is caused by the daily activities of people everywhere. It is a myth that pollution of our rivers and bays is caused mainly by industry or sewage. Most is caused by the every day activities of people in our city and suburbs. Individuals, businesses, local governments, and other community organizations all have a role in preventing pollution before it gets into our storm drainage system.



Reducing the discharge of pollutants will protect our rivers and lakes from pollution that may kill fish, close beaches, and increase weed and algae growth.

WHAT CAN I DO TO HELP?

It is simple! Dump nothing down the storm drain that you would not swim in or drink!

- Use less fertilizer on lawns
- Avoid pesticides
- Compost garden trimmings
- Recycle used oil
- Wash your car on the lawn, not on the driveway or street
- Pick up pet wastes
- Do not litter

**FOR MORE INFORMATION:
CITY OF FLORENCE
ENGINEERING DEPARTMENT
256-760-6350**

Storm drains flow directly to nearby rivers and streams, not to wastewater treatment plants. Your city street is really like waterfront property and everything rinsing off your roof, yard, and driveway goes to the river. Each year, people dump thousands of gallons of used oil, antifreeze, and other wastes into storm drains. Rainwater runs off streets, lawns, farms, construction, and industrial sites, and picks up fertilizers, dirt, pesticides, oil and grease, and many other pollutants on the way to our rivers, lakes, and coastal waters.

Call Before You Dig

The Florence Utilities Gas Department is a member of the Alabama One Call Line Location Center at 1-800-292-8525. This is a free call, and you need to call two working days before you start to dig. A representative will come to your location and locate all underground utilities free of charge to you.

By calling before you dig, you could avoid damaging the environment, interruption of your service, job/project delays, legal problems, accidents, and injuries.

Even if you are not a customer of the Florence Utilities Gas Department, you still might have gas lines around your property. That's why we are asking everyone to call 1-800-292-8525 or 811 before you dig.

Remember - this is a free service to you.

Llame Antes de Excavación

El departamento de Gas de utilidades de Florencia es un miembro del centro de ubicación de Alabama una llamada línea al 1-800-292-8525. Este es un llamado libre y es necesario llamar a dos días de trabajo antes de comenzar a excavar. Un representante vendrán a su ubicación y localizar todas las utilidades subterráneas sin costo para usted.

Al llamar a antes de que cava, se podrían evitar daños al medio ambiente, la interrupción de su servicio, trabajo o proyecto retrasos, problemas legales, accidentes y lesiones.

Incluso si usted no es un cliente del Departamento de Gas de utilidades de Florencia, todavía podría tener líneas de gas alrededor de su propiedad. Es por eso que pedimos a todo el mundo para llamar a 1-800-292-8525 o 811 antes que cavar.

Recuerde - que esto es un servicio gratuito para usted.

STORMWATER POLLUTION

Stormwater pollution is caused by the daily activities of people everywhere. It is a myth that pollution of our rivers and bays is caused mainly by industry or sewage. Most is caused by the every day activities of people in our city and suburbs. Individuals, businesses, local governments, and other community organizations all have a role in preventing pollution before it gets into our storm drainage system.

Storm drains flow directly to nearby rivers and streams, not to wastewater treatment plants. Your city street is really like waterfront property and everything rinsing off your roof, yard, and driveway goes to the river. Each year, people dump thousands of gallons of used oil, antifreeze, and other wastes into storm drains.

Rainwater runs off streets, lawns, farms, construction, and industrial sites, and picks up fertilizers, dirt, pesticides, oil and grease, and many other pollutants on the way to our rivers, lakes, and coastal waters.



Reducing the discharge of pollutants will protect our rivers and lakes from pollution that may kill fish, close beaches, and increase weed and algae growth.

WHAT CAN I DO TO HELP?

It is simple! Dump nothing down the storm drain that you would not swim in or drink!

- Use less fertilizer on lawns
- Avoid pesticides
- Compost garden trimmings
- Recycle used oil
- Wash your car on the lawn, not on the driveway or street
- Pick up pet wastes
- Do not litter

FOR MORE INFORMATION:
CITY OF FLORENCE
ENGINEERING DEPARTMENT
256-760-6350

Florence ENERGY

NEWS YOU CAN USE FROM FLORENCE UTILITIES



FLORENCE, Ala. – 200 years! That's how old the City of Florence, Alabama turned in March 2018. See inside to find out how you can celebrate with us!

Shoals Storytelling Festival

Friday & Saturday, May 18 & 19

**Thursday, May 17 – Prefestival
Event with Inge Auerbacher,
Holocaust Survivor**

Stormwater pollution is caused by the daily activities of people everywhere. Each of us has a role in preventing pollution before it gets into our storm drainage system. See what you can do to help.

florenceutilities.com

Florence Utilities will be closed on:

Monday, May 28

Memorial Day

Wednesday, July 11th

Independence Day

Florence Energy News

FLORENCE, Ala. – 200 years! That's how old the City of Florence, Alabama turned in March 2018.

Founded March 12, 1818, Florence was recognized as a potentially prosperous settlement by the Cypress Land Company, and the City has been going strong ever since. According to oral traditions, Florence earned its name from the Italian Surveyor Ferdinand Sannoner, who chose to name it for the famed city of Florence, Italy, which now serves as the City's Sister City. Florence is also known as **Alabama's Renaissance City** and is the largest city in the Florence - Muscle Shoals Metropolitan Statistical Area (MSA).

Starting with the birthday in March, each month will have a theme related to the City. The themed months will run through November 2018, with more information being released as the events draw closer. www.florence200.org

Schedule of Events



April
14th—10:00 a.m.—
 Walking Tour - Court Street
15th—1:30 p.m.—
 Rosenbaum House Tour
21st—10:00 a.m.—
 Walking Tour - Walnut St.

22nd—2:00 p.m.— Rosenbaum House Tour
27th—11:30 a.m.—Bicentennial Tree Dedication—Diebert Park
28th—10:00 a.m.—Walking Tour - Florence Cemetery

May

4th—5:00 p.m.—First Fridays
5th—Fabric Projects by Alabama Chanin
5th—10:00 a.m.—Tour Forks of Cypress Site
12th—Woodworking Projects by John Moody
18th & 19th—Story Telling Festival
19th & 20th—Arts Alive Festival—Wilson Park
May 26th—Clay Projects by Aaron Vincent
28th—11:00 a.m.—Memorial Day Ceremony - Veterans Park

For event details, visit www.florence200.org

July, August, and September Schedule coming in the next issue of Florence Energy!



Shoals Storytelling Festival

Friday & Saturday, May 18 & 19

Thursday May 17, Prefestival Event with Inge Auerbacher, Holocaust Survivor

Other storytellers include:

- Donald Davis
- Bill Lepp
- Dolores Hydock
- Tim Lowry
- Kate Campbell
- Bobby Horton
- Josh Goforth

For tickets and information visit www.shoalsstorytelling.com



Alabama's Renaissance City...
 Welcome to Florence, Alabama
 ...engineering department

Phase II NPDES; Stormwater Management Program

- [Public Outreach - "ILLICIT DISCHARGE DETECTION & ELIMINATION A GRATE CONCERN" Video](#) *5 videos*
- [Permit Application](#)
- [Appendix](#)
- [Permit to Construct Site Work](#)
- [Inspection Report](#)
- [Minimum Requirements for Construction Permitting and Erosion Control](#)
- [Ordinance for Illicit Discharge and Connection](#)
- [Ordinance for Stormwater Operation and Maintenance](#)
- [Ordinance for Erosion Sediment Control](#)
- [General Permit for Phase II Annual Report for 2015](#)

Quick Links

You Are Here: [City Departments](#)

[Subdivision Regulations](#)

[Phase II NPDES; Stormwater Management Program](#)

[Video; Illicit Discharge Detection & Elimination a Grate Concern](#)

[Construction Projects](#)

[Frequently Asked Questions](#)

[Permit Forms](#)

[Contact Directory](#)

[Return to florenceal.org](#)

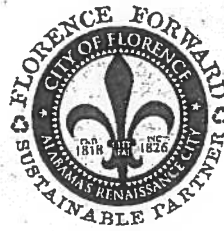
[Bill Batson](#)
City Engineer

City Engineering Department
 110 West College Street
 Florence, AL 35630

Phone: (256) 760-6350

Fax: (256) 740-4667

Most Popular	Site Tools	Resources	Contact
Employment	Help	Location & Map	Emergency Numbers
Pay Your Utility Bill	Site Search	Current Weather	Contact Directory
One-Stop Shop	Site Map	City Calendar	Email Us
Mayor's Message	Document Center		Connect With Us
Florence Police Department	Report a Problem		
Pay Parking Tickets	Employee Portal		
Renew Business License			



AGENDA

Florence Forwarded: Sustainable Partner Program Lunch & Learn

Tuesday, April 10, 2018
12:00 p.m. to 1:00 p.m.

*12:10 p.m. – 12:15 p.m.
Welcome by Mayor Steve Holt*

*12:15 p.m. – 12:20 p.m.
Valley Sustainable Community- Gold*

*12:20 p.m. – 12:25 p.m.
Sustainability Initiatives in the City of Florence*

*12:25 p.m. – 12:30 p.m.
Florence Forward Program: A Sustainable Partnership*

*12:30 p.m. – 12:35 p.m.
Success Story, Marriott of the Shoals*

*12:35 p.m. – 12:40 p.m.
Closing by Mayor Steve Holt*

City of Florence
Florence Forward Sustainable Partnership Launch
Lunch & Learn

Tuesday, April 10, 2018
The Club - 12:00 PM

AGENDA

12:15 PM – 12:20 PM

Rachel Mansell – Welcome and Introduce Mayor Holt

12:20 PM – 12:30 PM

Steve Holt – Opening Comments

12:30 PM – 12:40 PM

Rachel Mansell –

About Florence Forward

How to become a Florence Forward partners

12:40 PM – 12:45 PM

Steve Holt, Melissa Bevis, and Rachel Mansell

Recognize new Florence Forward Partners

12:45 PM – 1:00 PM

Closing

RSVP 4-10-18

No.	Name	Title	Company	Address	City	State	Zip	Email
1	Rick Collins	President	White, Lynn, & Collins	219 W. Alabama Street	Florence	AL	35630	wlcasso@aol.com
2	Richardmonds	Vice-President	White, Lynn, & Collins	219 W. Alabama Street	Florence	AL	35630	wlcasso@aol.com
3	Ben Maharey	Safety/Insurance Manager	City of Florence					bmaharey@florenceal.org
4	Bill Batson	City Engineer	City of Florence					bbatson@florenceal.org
5	Bryan Mitchell	GIS - Gas & Water Dept.	City of Florence					bmitchell@florenceal.org
6	David Koonce	Manager of Solid Waste, Street, \$ Recycling Dept.	City of Florence					dkoonce@florenceal.org
7	Mike Doyle	Manager of Gas & Water	City of Florence					mdoyle@florenceal.org
8	Rachel Mansell	Education/Outreach Coordinator	City of Florence					rmansell@florenceal.org
9	Steve Holt	Mayor	City of Florence					sholt@florenceal.org
10	Kaytrina Simmons	Council Member - District	City of Florence					ksimmons@florenceal.org
11	Michelle Eubanks	Council Member - District	City of Florence					meubanks@florenceal.org
12	Andrew Betterton	Council Member - District	City of Florence					abetterton@florenceal.org
13	Richard Morrissey	Manager of Electricity Dept.	City of Florence					rmorrissey@florenceal.org
14	Michelle Jones		Forsythe & Long	4560 Helton Drive	Florence	AL	35630	ahazy@forsytheandlong.com
15	Todd Nix	Community Relations	City of Florence					tnix@florenceal.org
16	Melissa Bailey	Director of Planning & Community Dev.	City of Florence					mbailey@florenceal.org
17	Amanda Coffman	Assoc. Professor	UNA	UNA Box 5049	Florence	AL	35630	alhoacker@una.edu
18	Esau Gardner	Dir. Of Operations	Tarkett	430 County Road 30	Florence	AL	35634	debbie.nabers@tarkett.com
19	Renee Mullins	Counselor	Mullins Associates	530 W. College St.	Florence	AL	35630	thefeelingsteacher@gmail.com
20	Greg Taylor	SVP, Commercial Relationship Manager	First Bank	121 N. Court St.	Florence	AL	35630	gtaylor@firstbankonline.com
21	Anita Whitaker	Vice President, Branch Sales Leader	CB&S Bank	320 S. Pine Street	Florence	AL	35630	anita.whitaker@cbsbank.net
22	Lupe Bustillos	HR Manager	Marazzitile/Monarch Tile		Florence	AL	35630	lupe@marazzitile.com
23	Stuart Mills	EHS Manager	Marazzitile/Monarch Tile		Florence	AL	35630	stuart@marazzitile.com
24	Belinda Duke	Owner	Celebration Yard Cards		Florence	AL	35630	marybelinda@yahoo.com
25	Marty Duke	Owner	Duke Family LLC	20 Hightower Place	Florence	AL	35630	marttybelinda@yahoo.com
26	Kate Brown	VP, Investor Relations & Bus. Growth	KTSB (Shoals Chamber)		Florence	AL	35630	kbrown@shoalschamber.com
27	Melissa Bevis	Business Development Coordinator	City of Florence		Florence	AL	35630	mbevis@florenceal.org
28	Giles McDaniel	Director	Shoals Entrepreneur Center	3115 Northington Ct.	Florence	AL	35630	giles@shoalsec.com
29	Suanne Sockwell	Administrative Asst.	Shoals Entrepreneur Center	3115 Northington Ct.	Florence	AL	35630	sshaw@shoalsec.com
30	Robert Whitten	Owner	Whitten Architect	118 E. Mobile Street	Florence	AL	35630	
31	Sara Frye	Administrative Asst.	Whitten Architect	118 E. Mobile Street	Florence	AL	35630	
32	Beth Dickerson	Secretary to Superintendent	Florence City Schools	102 S. Court St., 6th Floor	Florence	AL	35630	bdickerson@florencekt2.org
33	Gabe Basinger		Ringers Garage Door Company	655 S. Poplar St.	Florence	AL	35630	gabe@ringersdoors.com
34	Chris Hall		Ringers Garage Door Company	655 S. Poplar St.	Florence	AL	35630	gabe@ringersdoors.com
35	Terri Curry	Owner	Classic Clips	873 Florence Blvd.	Florence	AL	35630	terricurry@me.com
36	Rhonda Pearson	Store Manager	Dillard's	301 Cox Creek Pkwy.	Florence	AL	35630	rhonda.pearson@dillards.com
37	Barbara Frazier	MD	OBGYN	2407 Helton Dr.	Florence	AL	35630	bfrazier@hotmail.com
38	Brittany Hill	Owner	Hills Home Health	SEC	Florence	AL	35630	brittanym@hillshomehealth.com
39	Rhonda F. Richardson	Executive Director	Florence Housing Authority	303 N. Pine St.	Florence	AL	35630	richardson@flohousing.org
40	Shaler S. Roberts, III		Florence Housing Authority	303 N. Pine St.	Florence	AL	35630	shaler@flohousing.org
41	Chelsea Kauchick	Marketing & Leadership Programs	Shoals Chamber	20 Hightower Place	Florence	AL	35630	ckrauchick@shoalschamber.com
42	Kate Brown	VP, Investor Relations & Bus. Growth	Shoals Chamber	20 Hightower Place	Florence	AL	35630	ckrauchick@shoalschamber.com
43	Jeremy Goss	Financial Advisor	Edward Jones Investments	1705 Darby Dr.	Florence	AL	35630	jeremy.r.goss@edwardjones.com
44	Austin Penter	Financial Advisor	Edward Jones Investments	1705 Darby Dr.	Florence	AL	35630	jeremy.r.goss@edwardjones.com
45	Nancy Gonce	Attorney	Gounce & Associates	115 E. Mobile St.	Florence	AL	35630	ngonce@bellsouth.net
46	Elizabeth Gonce	Attorney	Gounce & Associates	115 E. Mobile St.	Florence	AL	35630	ngonce@bellsouth.net
47	Cheryl Jones		Compassus Hospice	507 E. Dr. Hicks Blvd.	Florence	AL	35630	Cheryl.Jones@compassus.com
48	Steven Butler		Compassus Hospice	507 E. Dr. Hicks Blvd.	Florence	AL	35630	Cheryl.Jones@compassus.com
49	Lisa Eckl	President	Florence Federal Credit Union	1505 N. Pine Street	Florence	AL	35630	lisaeckl@ffcuonline.com
50	Jenna Oak	Marketing	Florence Federal Credit Union	1505 N. Pine Street	Florence	AL	35630	lisaeckl@ffcuonline.com
51	Ian Sanford	Mayor of Sheffield	City of Sheffield	600 N. Montgomery Ave.	Sheffield	AL	35630	itsinala@sheffieldalabama.org
52	Ian Sanford	Guest	City of Sheffield	600 N. Montgomery Ave.	Sheffield	AL	35630	itsinala@sheffieldalabama.org

Annette Menne

From: Rachel Mansell
Sent: Tuesday, May 08, 2018 5:06 PM
To: Annette Menne
Cc: David Koonce
Subject: Environmental Education
Attachments: Copy of Stormwater activities 2017.xlsx; 2018 Rubbish Report.jpg; The Mayor-Anti Cigarette Butts Campaign 2.mpg; Video.mov; 2017 Rubbish Report.pdf; billboard TRLT 2017.png; 2018PickupDay.mp4; Press Release - Cigarette Butts Recycled 2018.doc; Litter Tournament Flyer 2017.jpg

Annette,

Attached is the Excel list of presentations, tours, and meetings. Let me know if you need it in a different format. I also included some additional documents and videos. It has been a big year for environmental initiatives.

We joined ICLEI – Non-profit for City Governments for Sustainability and Alabama Pals- People against a littered state. The large events include Cigarette Butt Campaign- No Butts About It, Citywide Clean Up, Tennessee River Litter Tournament, and Florence Forward – Sustainable Partners Program. We also sponsored the videos below.

Steve Trash Videos:

REDUCE REUSE RECYCLE - <https://vimeo.com/210627197>

POLLUTION - <https://vimeo.com/211196086>

THE WATER CYCLE - <https://vimeo.com/221814405>

I hope you are having a great week. Please let me know if I need to clarify or you need additional info.

Sincerely,

Rachel Mansell
City of Florence
Education Outreach Coordinator
Solid Waste, Street, & Recycle
256 627 0970
rmansell@florenceal.org

Environmental Education 2017

DATE	Event	#	Notes
1/20/2017	Citywide Clean up day	8	
1/25/2017	UNA Recycle Program	10	
1/27/2017	Litter Hotline Program	12	
2/6/2017	Boy Scouts Meeting		Environmental Education presentation: recycle, storm water, & litter
2/27/2017	City Ambassadors Program	40	10 min presentation on Florence Sustainability Efforts/goals
2/10/2017	Earth Day Planning meeting	10	
2/23/2017	UNA Sustainability Center	28	UNA Sustainability Center meeting for initiatives on campus.
3/7/2017	Youth & Government Day	27	Florence High School Students toured recycle & street dept.
3/21/2017	Keep Alabama Beautiful Meeting	45	Statewide Training meeting on water conservation, storm water, recycling and litter.
3/9/2017	TVA Sustainable Community Meeting	4	City employees received training on sustainability programs
3/17/2017	Urban Forestry Conference Booth	220	Environmental Education Booth: recycle, storm water, & anti litter.
4/19/2017	UNA Earth Day Celebration	500+	University of North Alabama Earth Day Celebration display for students to take a pledge to recycle and take an active stance on sustainable initiatives 600+ students
5/22/2017	Litter Index Survey	2	Keep the Shoals Beautiful completed a litter index in the City of Florence and determined the monitored street has improved since last year.
4/8/2017	Shred Day Event	120	Better Business Beau hosted a Shred Event to the public. The event included an environmental display about recycling.
6/6/2017	Community Sustainability Meeting	50	Florence Lauderdale Tourism hosted a community meeting to discuss community sustainability efforts.
3/11/2017	Courier Journal - Full Page Inse Education	17,000	Flyers were placed in the weekly paper to all residents

Environmental Education 2017

4/7/2017	First Friday Event - Goes Green Booth	2000-3000	Environmental Education Booth: recycle, storm water, & anti litter. We gave away coloring books, supper hero capes, Stop Litter T-shirts
4/8/2017	Shoals Earth Day Festival	500+	Shoals Earth Month Fest was held in McFarland Park. The Event hosted a booth by Natural Resources and Conservation Services. They brought the character Ruby the Raindrop and Sammy Soil to educate students about storm water pollution and water conservation. 160 brochures and coloring books were distributed.
3/18/2017	Citywide Clean up event		Event was held from 8:00 – 12:00. There were 11,600 lbs. of trash were collected by over 400+ volunteers from the city's roadsides and drainage ditches. (Volunteers were all ages 8 -70)
4/15/2017	Cypress Creek Clean Up	12	Kayaks and canoes float cypress creek and pick up trash
4/20/2017	Recycle Center Tour - UNA	40	UNA Sustainability center sponsored busses and coordinated a tour of the recycling center for faculty and students.
4/26/2017	TVA Sustainability Meeting		Meeting
4/21/2017	First Methodist Day School Tol tour	45	Students, parents, & teachers toured the landfill & recycle
4/10-14/2017	Forest Hill School Visit - 1st		Environmental Education presentation: recycle, storm water, & litter

Environmental Education 2017

4/25/2017	Forest Hill School Visit -Kinderg	Presentation	120	Environmental Education presentation: recycle, storm water, & litter
5/6/2017	Kids Fest	Booth		800+ kids and adults Environmental Education Display along and basket ball goal for students to "Take a shot at Recycling"
5/19/2017	Clean Campus Award	Presentation		St. Joseph Catholic School was presented a 5' trophy and environmental presentation by Steve Trash
5/20/2017	Kilby First Grade	Presentation	23	Environmental Education presentation: recycle, storm water
5/25/2017	EPA National Webinar	Presentation	500	The City of Florence was featured on the national EPA webinar on waste reduction initiatives.
6/9/2017	Green Team Meeting	Meeting	7	City of Florence Sustainability Efforts
6/13/2017	KTSB River Clean up Meeting	Meeting	8	
6/19/2017	Trinity Episcopal Green Camp	[Presentation	60	Student lesson on recycle and litter/made supper hero capes
6/24/2017	KTSB River Clean up Meeting	Meeting	8	
7/15/2017	Litter Clean-up	Event	40	Church of the Highlands volunteers collected litter.
7/23-27/2017	Jazz it up with Trash	Event	500	Jazz it up with Trash, kids and parents learned to build instruments from recyclable materials and the effects of litter on the environment. 150 brochures, books and coloring books were distributed.
7/23/27/2017	Handy Festival - In Harmony w/	Events	1000	Handy Festival events were litter free events with educational announcements and recycling receptacles provided. ADEM recycling dept. set up booths and distributed information and provided games.
8/1/2017	Parents Night Out Event		400	Environmental Education Display along and basket ball goal for students to "Take a shot at Recycling"
8/2/2017	Green Team Meeting	Meeting	10	
8/3/2017	Keep the Tenn. River Clean	Meeting	5	
8/17/2017	Florence Middle School	Meeting	8	Recycle team meeting

Environmental Education 2017

9/11/2017	Florence Ambassadors	Presentation	40	10 min presentation on Florence Sustainability Efforts/goals
9/9/2017	KTSB River Clean up	Tournament Event	100+	Volunteers collect 200+ bags of trash from the Tennessee River
9/10/2017	Faith Church Litter clean up	Event	60	Volunteers collected trash from the roadways and ditches
9/18/2017	Florence City Council Meeting			Presentation to litter tournament winners
9/25/2017	UNA Freshman Class	tour	20	Students toured the Florence Recycle Center
10/16/2017	Florence Fall Festival	Booth	400+	Kid's Fall Festival Booth display on composting, recycling and litter prevention with the Take a shot at recycling game and dig for a pet worm. 1000+ kids and parents come to the city event for games and fun.
11/6/2017	ICLEI Conference Call			City of Florence Sustainability Efforts
13/14-Oct-17	Keep Alabama Beautiful Conference		2	Attended the statewide training on litter prevention
10/4/2017	Florence Forward			Developed Online Application for Businesses
10/17-20/2017	Hosted Statewide Recycling Systems Training		20	Hosted a Statewide Training session for Recycling Systems
10/24/2017	UNA booth- Sustainability Efforts		140	Students set up a booth for the week to educate students on recycling and litter
11/6/2017	ICLEI Conference Call		6	City leaders attended a conference call about joining ICLEI (governments for sustainability) and to learn about a City Carbon Footprint Inventory
11/8/2017	Lunch & Learn Planning Session		5	The initial planning session for future lunch & learns to educate city employees on environmental issues.
11/9/2017	Florence Forward Committee Meeting		8	
11/15/2017	UNA - America Recycles Day Event		20	UNA outdoor adventure center presentation & PowerPoint
11/16/2017	TVA Sustainable Community Meeting		12	
12/5/2017	Recycle Center Tour - Shoals Leadership		22	Shoals Leadership Class toured the Florence Recycle Center and listened to a presentation on city environmental education.
12/6/2017	Valmet Employee Training		50+	Employees received a presentation and PowerPoint on recycling, litter, storm water, and sustainability.

The Keep the Shoals Beautiful board meets monthly. The City of Florence is represented on the board and we contribute \$2,500 annually. The City of Florence representative is also on the Shoals Earth Month board that hosts the annual Earth Day Festival.

The City of Florence participates in State Boards including the Keep Alabama Beautiful, Alabama Recycling Coalition, and Southeast Recycling Development Council, Solid Waste Association of Alabama to stay informed and maintain certifications.

Master artwork may not be reproduced without the prior written consent of das.
© 2007 das Manufacturing, Inc.

4.0" DIAMETER / COLORS = DAS GREEN AND BLUE / BLACK ON BACK



FRONT



BACK

EXCERPT FROM CITY OF FLORENCE SUBDIVISION REGULATIONS
ARTICLE II. SECTION IV.(C)(3)(j) PAGE 37

Transportation Standard Specifications for Highway Construction, latest edition.

(3) 110 pounds/square yard (1") hot bituminous concrete wearing course in accordance with Section 416, Mix A, of the Alabama Department of Transportation *Standard Specifications for Highway Construction*, latest edition.

(4) Prime coat in accordance with Section 401 of the Alabama Department of Transportation *Standard Specifications for Highway Construction*, latest edition.

The mix will be approved by the City Engineer and be covered in the latest memorandum recommendation from the office of the Alabama Department of Transportation County Transportation Engineer or as specified by the Alabama Department of Transportation *Standard Specifications for Highway Construction*, latest edition. Local approved limestone may be used in lieu of the siliceous aggregate requirement.

(j) Storm drainage: An adequate storm drainage system based on a minimum twenty-five (25) year design storm including curb, pipes, culverts, headwalls, and ditches will be provided for the drainage of surface water. All cross drains will have sufficient length for required typical section and will be installed according to ALDOT specifications. Minimum diameter of cross drain pipes will be eighteen (18) inches. Cross drains will be concrete pipe (Class III minimum) and will meet or exceed the current ALDOT specifications. Minimum diameter of side drain pipes will be eighteen (18) inches. Side drains will be either concrete pipe (Class III minimum), bituminous corrugated metal pipe with paved invert (14 gauge minimum), or High Performance Polyethylene pipe (color other than black).

All manhole covers for drainage structures shall be lettered "Dump No Waste! Drains to Waterways" with a raised fish image.

(k) Installation of utilities: After grading is completed and approved by the developer's engineer and City Engineer and before any roadbed processing of the sub-grade is performed, all of the underground utilities within the roadway prism will be installed completely and approved by the developer's engineer and the City Engineer throughout the length of the street and across the section. Once pavement is placed, it will not be open cut except with written permission of the City Engineer. Any utility desiring to cross the road will go over the road or dry bore under the road. All water lines located under pavement will be encased. Backfill placed in utility trenches will be a suitable material compacted to density requirements in accordance with the Alabama Department of Transportation *Standard Specifications for Highway Construction*, latest edition.

(l) Signage of subdivision: Proper signage in accordance with the *Manual of Uniform Traffic Control Devices*, latest edition, (MUTCD) will be required and maintained in all subdivisions. The developer will be responsible for the placement and maintenance of proper signage of new streets or roads until and unless the road is accepted into the city road system. A signage plan will be submitted to the City Engineer for approval prior to the installation of any street signs. Regulatory and warning signs will be in accordance with the MUTCD. All

PUBLIC INVOLVEMENT AND PARTICIPATION

- 2017 Clean-Up Day Flier & Rubbish Report (3/18/17)
- 2018 Clean-Up Day Flier and Rubbish Report (3/24/18)
- 2017 Tennessee River Litter Tournament Flyer and Billboard (9/9/17)
- New Cigarette Butt Recycling Program Press Release (2/6/18)
- Florence Forward Sustainability Partnership – website screenshot
- Minimum Requirements for Construction Permitting and Erosion Control
- Permit to Construct Site Work
- Ordinance for Stormwater Operation and Maintenance
- Ordinance for Erosion and Sediment Control



Rubbish Report
March 18
2017
11,660 lbs.

Thank you for caring enough to make a difference and giving up your Saturday. We will continue to work together toward "no litter"! - Mayor Steve Holt



11,660 lbs. of TRASH
406 Volunteers
61 Organizations



SPONSORS

Mayor's Office • City Council Members • Waste Connections
PALS • Florence Gas & Water • Rosie's Cantina
McDonald's • LAMAR • Courier Journal
Charter Media • 102.7 KISS FM • WHNT
Walmart • GLAD • On Local TV - Steve Jackson

THANK YOU!

102.7 KISS FM
Agrium
Alabama Chanin
American Wholesale Book Company
Charter Media
Church of Latter-Day Saints
Church of the Highlands
City of Florence Employees
Courier Journal
Cub Scouts Troop #285
Faith Church
Florence Beautification Board
Florence Lauderdale Tourism
Florence Main Street
Florence Middle School Student Council
GLAD bags
Keep Alabama Beautiful
Keep the Shoals Beautiful
LAMAR
LCHS JAG
Listerhill
Lowe's Home Improvement
Marriott Shoals Hotel & Spa
McDonalds
National Society of Leadership UNA
North Alabama Medical Center-ECM
NW Shoals Nursing Students
Octapharma Plasma
Office Depot
On Local TV - Steve & Cindy Jackson
P&K Western Store
PALS - People Against Littered State
Project Say Something
Riverhill Girl Scout Troop 10503
Rosie's Cantina
Salvation Army
Shoals Cycling Club
Southern Legacy Outreach
Southern Wellness Services
Southwire
Starbucks
Sweet Paws Pet Sitting
The ROCK Church
Trail life Troop 5238
Trinity Mission Baptist
UNA - Physics & Earth Science
UNA Athletics Football
UNA Habitat for Humanity
UNA International Students
UNA Troop 75
Underwood Baptist Church
Walgreens Call Center
Walmart - Cloverdale Rd
Walmart - Hough Rd
Waste Connections
WHNT

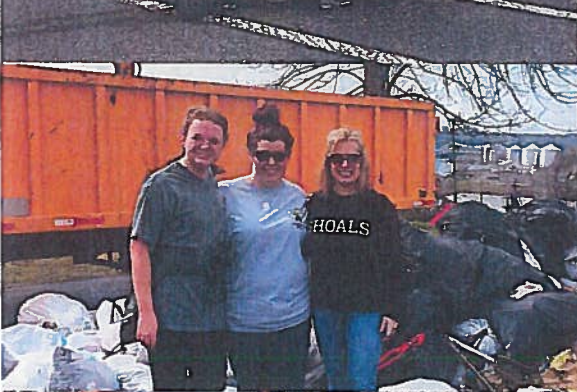


KEEP THE SHOALS BEAUTIFUL

KEEP AMERICA BEAUTIFUL AFFILIATE

A big THANK YOU to all of the residents and businesses that work all year to help
Keep the Shoals Beautiful.

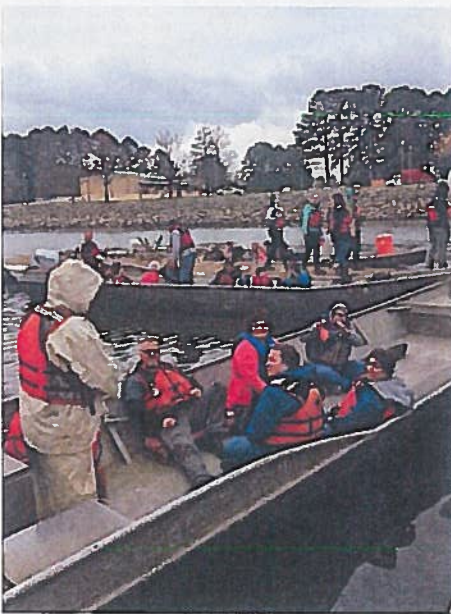






Rubbish Report March 24 2018 9,460 lbs.

Thank you for caring enough to make a difference and giving up your Saturday. We will continue to work together toward "no litter"! - Mayor Steve Holt



9,460+ lbs. of TRASH
334 Volunteers
56 Organizations



SPONSORS

Mayor's Office • Waste Connections, Inc.
Pals • Florence Gas & Water
Rosie's Cantina • Times Daily
McDonald's • LAMAR • Courier Journal

**Keep the Shoals
Beautiful**
Keep America Beautiful Affiliate

Keep the Tennessee River Beautiful • Tennessee Valley Authority

Agrium	National Society of Leadership UNA
American Wholesale Book Company	North Alabama Medical Center-ECM
Church of Latter-Day Saints	On Local TV - Steve & Cindy Jackson
Church of the Highlands	PALS - People Against Littered State
City of Florence Employees	Project Say Something
Courier Journal	Riverhill Girl Scout Troop 10503
Cub Scouts Troop #285	Rosie's Cantina
Faith Church	Salvation Army
Florence Beautification Board	Shoals Cycling Club
Florence Lauderdale Tourism	SSWA Recycling
Florence Main Street	Southern Legacy Outreach
Florence Mayor & Council Members	Southern Wellness Services
Florence Middle School	Southwire
Florence High School	Quad Cities Daily
Florence Solid Waste, Street, & Recycle	The Rock Church
Florence Customer Service Department	Tennessee Valley Authority
Florence Gas & Water Department	TimesDaily News
Florence Business Development	Trail Life Troop 5238
GLAD bags	Trinity Mission Baptist
Keep Alabama Beautiful	UNA - Physics & Earth Science
Keep the Shoals Beautiful	UNA International Students
Living Lands & Water	Underwood Baptist Church
Keep the Tennessee River Beautiful	WAAY 31 News
LAMAR Advertising	Waste Connections Inc.
Lowe's Home Improvement	WHNT News 19
Marriott Shoals Hotel & Spa	White Contracting Inc.
McDonalds	Workout Anytime Fitness



A big THANK YOU to all of the residents and businesses that work all year to help
Keep the Shoals Beautiful.



erizon 5:39 AM 100%

Florence

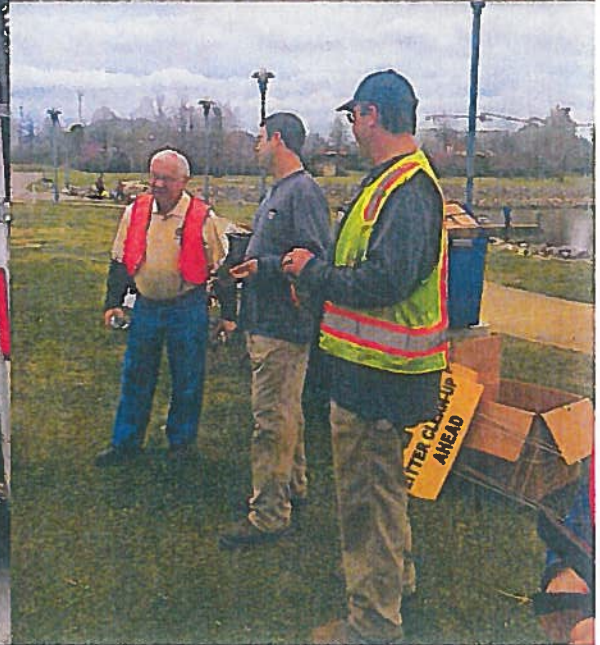
Cloudy

60°

Saturday TODAY	69	48	
8AM	9AM	10AM	11AM
61°	63°	64°	65°
Sunday	66	49	
Monday	58	51	
Tuesday	69	61	
Wednesday	69	60	







**Keep the Shoals
Beautiful**

Keep America Beautiful Affiliate



Tennessee River Litter Tournament

**Fish for Litter on Lake Pickwick & Lake Wilson
to Catch \$1000 in CASH!**

Saturday, September 9, 2017

8:00 am - Noon

Shoals area collection sites include:

- ≈ McFarland Park, Florence
- ≈ Lock Six, Killen
- ≈ TVA Rock Pile Recreation Area
- ≈ Riverfront Park, Sheffield
- ≈ Cypress Creek, Cox Creek to
Wildwood park, Florence

Register a Group!

KTSB@keeptheshoalsbeautiful.com

Call 256 627 0970

1st \$500 2nd \$200 3rd \$100 & More CASH Prizes!

Each 13-gallon trash bag you fill with litter from the Tennessee River or the shoreline enters you for a chance to win.
Start now and bring your full bags to our collection site or join us for the tournament!

Gloves, litter grabbers, and trash bags will be provided the day of the tournament. Bring your own or use ours!



REGISTER A GROUP: 256.627.0970

Tennessee River Litter Tournament

SAT. SEPTEMBER 9TH - 8^{AM} - NOON

WIN! Cash Prizes & More!





PRESS RELEASE

City of Florence • P. O. Box 98 • Florence, AL 35631 • (256) 760-6400 • Fax (256) 760-6388

FOR IMMEDIATE RELEASE

DATE: February 6, 2018
CONTACT: Mayor's Office
PHONE: (256) 760-6400
FAX: (256) 740-4665

NEW CIGARETTE BUTT RECYCLING

Florence, Alabama – Mayor Steve Holt announced that new Cigarette Butt Recycling Receptacles are being placed around the Florence- Lauderdale Government building and City Hall. The cigarette butts that are placed in these bins will be recycled into something new! Florence has partnered with a company called Teracycle that will recycle the butts at no cost and make a donation to Keep America Beautiful for each pound of butts recycled. The primary goal is to place effective disposal containers for cigarette butts to prevent litter. The secondary benefit is that they could be recycled.

How does it work?

Cigarette butts are placed in specific receptacles.

Butts are collected and mailed to Teracycle at no cost.

Tobacco is separated and removed from the filters.

Filters are sterilized, shredded, and melted.

The plastic pellets are used to make something new

such as plastic shipping pallets, railway sleepers and more.

Cigarette filters are full of toxins and those chemicals can leach into the ground and waterways. They should be disposed of properly. Mayor Holt said, "These small butts add up to our largest litter problem and can last up to 10 years. Please join in the effort to help Keep Florence Clean and Beautiful!"





Alabama's Renaissance City
 Welcome to Florence, Alabama

...sustainability partnership

FLORENCE FORWARD SUSTAINABLE PARTNER PROGRAM - APPLY TODAY

The City of Florence is pleased to announce the launch of the Florence Forward Sustainable Partner Program. This program is a revamp of the Certified Green Team Partnership Program. The goal of the program is to highlight and support the businesses and organizations in Florence that are committed to sustainable practices. The sustainable partner application is a checklist that includes the most common green practices, and encourages participants to incorporate sustainable initiatives specific to their operation.

Businesses and organizations that become a Florence Forward Sustainable Partner will be recognized by the Mayor at a City Council meeting, receive a sustainable partner logo for publication, be added to the website list of sustainable partners and more. Current Green Team Partners will automatically be transferred to the new Florence Forward program. To apply, simply fill out the application below:



City of Florence

FLORENCE FORWARD: Sustainable Partnership Program Standards and Goals

Please check next to each standard met and list other efforts executed in each category. Please attach a narrative if necessary.

To be a sustainability partner, you must comply with all applicable environmental laws, then go beyond compliance to be environmentally friendly.

General Florence Forward Standards

- Track water and energy usage and solid and hazardous waste generation.
- Adopt a written environmentally preferable (or sustainable) purchasing policy.
- Establish a designated person that can help guide efforts to move your business forward.
- Provide on-going incentives or training opportunities to encourage management and employee participation. Utilize free presentations on water conservation or recycling.
- Inform your customers about your efforts to meet the Sustainable Partner Standards.

Water Conservation Standards

- Monitor water bills for sudden rises in usage and contact your water provider should this occur.
- Regularly check for, report and repair leaks
- Use signs in restrooms to encourage water conservation and report leaks
- Install toilets using 1.6 gallons per flush or less.
- Mulch all non-turf areas.
- Plant drought tolerant, hardy, native plants.

Other

Energy Conservation Standards

- Complete, regularly scheduled maintenance on your heating, air conditioning and refrigeration systems.
- Purchase energy star electronic equipment.
- Replace lighting with the most energy efficient fixtures.
- Replace any bulbs with efficient LED.

- Institute a formal policy to turn off equipment when possible.
- Always turn off lights when leaving.
- Set thermostat to 78 degrees for cooling. 68 degrees for heating in unoccupied rooms and use the thermostat's night setback if applicable.
- Set water heaters to standard 124-130F.

Other

Solid Waste Reduction & Recycling Standards

- Look in your garbage dumpster to see if there are items that could be reused by someone else or recycled.
- Recycle all paper, cardboard, metal, electronics, cooking oil, motor oil and #1 and #2 plastic bottles or jugs.
- Set copiers on defaults to double-sided.
- Discourage printing of emails.
- Replace disposables with permanent items (e.g. mugs, dishes, utensils).
- Leave mowed grass on the lawn (grasscycling).
- Print on previously printed paper.
- Purchase copier/printer paper with at least 30% post-consumer waste.
- Purchase products made from recycled materials when possible.
- Sell products made with recycled content if applicable.
- Follow the purchasing policy to eliminate unnecessary purchases.

Other

Pollution Prevention Standards

- Assess office to identify ways to prevent pollution.
- Adopt-a-Street or section of the street next to the facility.
- Contact Keep the Shoals Beautiful & Florence Recycling Center for litter prevention materials and posters.
- Encourage employees to volunteer in the Citywide Clean-up.
- Place proper receptacles in potential sites of litter.
- Restrict use of hazardous products by buying them in small quantities and limit access to authorized staff.
- Regularly check and clear storm drain openings and basins of litter and debris.
- Keep company vehicles well maintained to prevent leaks and minimize emissions.
- Have an outdoor ashtray for smokers.

Other

Please describe any other initiatives your business/organization has implemented

Applicant Name (Name of Business/Organization) *

First Last

Type of Business/Organization: (retail, restaurant, automotive, bank, school) *

Title *

Sustainable Coordinator *

Phone *

Fax *

#####

#####

Physical Address *

Street Address

City

State / Province / Region

Postal / Zip Code

Mailing Address *

Street Address

Street Address

City

State / Province / Region

Postal / Zip Code

Email Address *

Please provide any additional narrative as needed:

Authorized Signature of Applicant *

Clear

I pledge to be mindful of the environmental impacts and make sustainable choices for the business or organization. I will take water conservation, energy efficiency, waste reduction and pollution prevention efforts into consideration in my decision making process. I pledge to promote the sustainable initiative in our city and continue to grow environmentally friendly business practices.

Please use your mouse, stylus or finger to add your signature.

Organization

Date Time

/ /
MM DD YYYY

Most Popular

- [Employment](#)
- [Pay Your Utility Bill](#)
- [One-Stop Shop](#)
- [Mayor's Message](#)
- [Florence Police Department](#)
- [Pay Parking Tickets](#)
- [Renew Business License](#)

Site Tools

- [Help](#)
- [Site Search](#)
- [Site Map](#)
- [Document Center](#)
- [Report a Problem](#)
- [Employee Portal](#)

Resources

- [Location & Map](#)
- [Current Weather](#)
- [City Calendar](#)

Contact

- [Emergency Numbers](#)
- [Contact Directory](#)
- [Email Us](#)
- [Connect With Us](#)



City of Florence, Alabama
110 West College Street
Florence, Alabama 35630

(256) 760-6300

**MINIMUM REQUIREMENTS FOR CONSTRUCTION PERMITTING
AND
EROSION CONTROL**

ADDITION TO SUBDIVISION REGULATIONS

Construction which disturbs one acre or more of ground surface within the city limits of Florence will require a general permit for stormwater runoff control. This permit will be obtained from ADEM by the owner/developer of the property. A copy of the approved permit will be submitted to the city stormwater management personnel prior to beginning site construction, grading or clearing activity. The owner/developer will submit along with his construction plans, a plan for Best Management Practice (BMP). The BMP will describe in detail the use of silt fences, hay bales, rip rap siltation basins or other means to be used for erosion control. Placement of silt fence, hay bales and rip rap will be done as per the city of Florence Standard details for erosion control.

All construction plans will include by notation in the project notes, requirements for the contractors to provide erosion control, for preventing fuel or hazardous chemical spills and over use of pesticides, fertilize, or herbicides. Waste material such as asphalt, petroleum products, sealants, concrete, etc., will not be left on site in contact with stormwater runoff.

Any information provided by the public as to betterment of the proposed BMP or as to the failure of an operating BMP can be addressed to the stormwater management personnel for consideration or correction.

Any owner/developer of a site one acre or larger which does not conform to these regulations is subject to a fine of not more than \$500 per day.

Once an owner/developer has been notified by the city stormwater management personnel that his/her BMP is not meeting the requirements of these regulations the owner/developer will have 3 working days to correct the problem before fines become effective. The fine will be enforced each day thereafter that the BMP is not corrected. The owner/developer will be responsible for the correction and for notifying the city stormwater management personnel when the correction are made.

PERMIT TO CONSTRUCT SITE WORK

PROJECT NAME: _____

The City of Florence Engineering Department has reviewed the BMP for this project and has received a copy of the approved ADEM permit.

_____ **is hereby permitted to begin clearing
Developer/Owner
and excavation operations.**

City Engineer

Date _____

THIS SIGN TO BE POSTED AT THE CONSTRUCTION SITE

ORDINANCE FOR STORMWATER OPERATION AND MAINTENANCE

ORDINANCE #2004-16

BE IT ORDAINED BY THE CITY COUNCIL OF THE CITY OF FLORENCE, ALABAMA
as follows:

Section I. Best Management Practice (BMP)

Definitions. Structural device, measure, facility, or activity that helps to achieve stormwater management control objectives at a designated site.

Plan. A document approved at the site design phase that outlines the measures and practices used to control stormwater runoff at a site. The plan shall be prepared by a professional engineer. The subdivision regulations and the building code shall be revised to include these regulations.

Section II. Design

- A. All stormwater BMPs shall be designed in a manner to minimize the need for maintenance and reduce the chances of failure. Design guidelines are outlined in the most recent version of the subdivision regulations of the City of Florence.
- B. Stormwater easements and covenants shall be provided by the property owner for access for facility inspections and maintenance. Easements and covenants shall be recorded with City of Florence prior to the issuance of a permit.
- C. Final design shall be approved by The City Engineer.
- D. The property owner/developer will acquire an NPDES Permit from ADEM and present a copy to the City Engineer.
- E. A permit will be issued by the City Engineer prior to construction start up. This permit acknowledges receipt of proper BMP and ADEM permit.

Section III. Routine Maintenance

- A. All stormwater BMPs shall be maintained according to the measures outlined in the most recent version of The City of Florence Stormwater Pollution Prevention Plan, as required by the subdivision regulations and as approved in the permit.
- B. The person(s) or organization(s) responsible for maintenance shall be designated in

the plan. Options include

- 1) Property owner
- 2) Homeowner's association, provided that provisions for financing necessary maintenance are included in deed restrictions or other contractual agreements
- 3) Private contractor under contract with the Owner.

C. Maintenance agreements shall specify responsibilities for financing maintenance.

Section IV. Nonroutine Maintenance

Nonroutine maintenance includes maintenance activities that are expensive but infrequent, such as pond dredging or major repairs to stormwater structures.

- A. Nonroutine maintenance shall be performed on an as-needed basis based on information gathered during regular inspections.
- B. If nonroutine maintenance activities are not completed in a timely manner or as specified in the approved plan, The City of Florence may fine the Owner an appropriate amount to cover the cost of the city providing maintenance.

Section V. Inspections

- A. The person(s) or organization(s) responsible for maintenance shall inspect stormwater BMPs on a regular basis as outlined in the plan.
- B. Authorized representatives of The City of Florence may enter at reasonable times to conduct on-site inspections or routine maintenance.
- C. For BMPs maintained by the property owner or homeowner's association, inspection and maintenance reports shall be filed with The City of Florence, as provided for in the plan.
- D. Authorized representatives of The City of Florence, may conduct inspections to confirm the information in the reports filed under Section C.

ADOPTED this the 16th day of March, 2004.

ORDINANCE FOR EROSION AND SEDIMENT CONTROL

ORDINANCE #2004-18

BE IT ORDAINED BY THE CITY COUNCIL OF THE CITY OF FLORENCE, ALABAMA
as follows:

Section I. Introduction/ Purpose

During the construction process, soil is highly vulnerable to erosion by wind and water. Eroded soil endangers water resources by reducing water quality and causing the siltation of aquatic habitat for fish and other desirable species. Eroded soil also necessitates repair of sewers and ditches and the dredging of lakes. In addition, clearing and grading during construction cause the loss of native vegetation necessary for terrestrial and aquatic habitat.

As a result, the purpose of this local regulation is to safeguard persons, protect property, and prevent damage to the environment in The City of Florence. This ordinance will also promote the public welfare by guiding, regulating, and controlling the design, construction, use, and maintenance of any development or other activity that disturbs or breaks the topsoil or results in the movement of earth on land in The City of Florence.

Section II. Definitions

Certified Contractor

A person who has received training and is licensed by ADEM to inspect and maintain erosion and sediment control practices.

Clearing

Any activity that removes the vegetative surface cover.

Drainage Way

Any channel that conveys surface runoff throughout the site.

Erosion Control

A measure that prevents erosion.

Erosion and Sediment Control Plan

A set of plans prepared by or under the direction of a licensed professional engineer indicating the specific measures and sequencing to be used to control sediment and erosion on a development site during and after construction.

Grading

Excavation or fill of material, including the resulting conditions thereof.

Perimeter Control

A barrier that prevents sediment from leaving a site by filtering sediment-laden runoff or diverting it to a sediment trap or basin.

Phasing

Clearing a parcel of land in distinct phases, with the stabilization of each phase completed before the clearing of the next.

Sediment Control

Measures that prevent eroded sediment from leaving the site.

Site

A parcel of land or a contiguous combination thereof, where grading work is performed as a single unified operation.

Site Development Permit

A permit issued by the municipality for the construction or alteration of ground surface. Permitted BMP includes improvements and structures for the control of erosion, runoff, and grading.

Stabilization

The use of practices that prevent exposed soil from eroding.

Start of Construction

The first land-disturbing activity associated with a development, including land preparation such as clearing, grading, and filling; installation of streets and walkways; excavation for basements, footings, piers, or foundations; erection of temporary forms; and installation of accessory buildings such as garages.

Watercourse

Any body of water, including, but not limited to lakes, ponds, rivers, streams, and bodies of water delineated by The City of Florence.

Waterway

A channel that directs surface runoff to a watercourse or to the public storm drain.

Section III. Permits

- A) No person shall be granted a site development permit for land-disturbing activity that would require the uncovering of *1 acre or more* without the approval of an Erosion and Sediment Control Plan by ADEM.
- B) No site development permit is required for the following activities:
 - 1) Any emergency activity that is immediately necessary for the protection of life, property, or natural resources.
 - 2) Existing nursery and agricultural operations conducted as a permitted main or accessory use.
- C) Each application shall bear the name(s) and address(es) of the owner or developer of the site, and of any consulting firm retained by the applicant together with the name of the applicant's principal contact at such firm.
- D) Each application shall include a statement that any land clearing, construction, or development involving the movement of earth shall be in accordance with the Erosion and Sediment Control Plan and that a certified contractor shall provide inspection when construction or grading activity takes place.
- E) The applicant will be required to file with City of Florence a faithful performance bond, letter of credit, or other improvement security in an amount deemed sufficient by the city to cover all costs of improvements, landscaping, maintenance of improvements for such period as specified by The City of Florence and engineering and inspection costs to cover the cost of failure or repair of improvements installed on the site.

Section IV. Review and approval

- its
- A) ADEM will review each application for a site development permit to determine conformance with the provisions of this regulation. ADEM shall, in writing:
- 1) Approve the permit application;
 - 2) Approve the permit application subject to such reasonable conditions as may be necessary to secure substantially the objectives of this regulation, and issue the permit subject to these conditions; or
 - 3) Disapprove the permit application, indicating the reason(s) and procedure for submitting a revised application and/or submission.
- of
- B) Failure of the ADEM to act on an original or revised application within 30 days receipt shall authorize the applicant to proceed in accordance with the plans as filed unless such time is extended by agreement between the applicant and ADEM. Pending preparation and approval of a revised plan, development activities shall be allowed to proceed in accordance with conditions established by ADEM.

Section V. Erosion and Sediment Control Plan

- A) The Erosion and Sediment Control Plan shall include the following:
- 1) A sequence of construction of the development site, including stripping and clearing; rough grading; construction of utilities, infrastructure, and buildings; and final grading and landscaping. Sequencing shall identify the expected date on which clearing will begin, the estimated duration of exposure of cleared areas, areas of clearing, installation of temporary erosion and sediment control measures, and establishment of permanent vegetation.
 - 2) All erosion and sediment control measures necessary to meet the objectives of this local regulation throughout all phases of construction and after completion of development of the site. Depending upon the complexity of the project, the drafting of intermediate plans may be required at the close of each season.
 - 3) Seeding mixtures and rates, types of sod, method of seedbed preparation, expected seeding dates, type and rate of lime and fertilizer application, and kind and quantity of mulching for both temporary and permanent vegetative control measures.
 - 4) Provisions for maintenance of control facilities, including easements and estimates of the cost of maintenance.
- B) Modifications to the plan shall be processed and approved or disapproved in the same manner as Section IV of this regulation, may be authorized by ADEM by written authorization to the permittee, and shall include

- 1) Major amendments of the erosion and sediment control plan submitted to ADEM
- 2) Field modifications of a minor nature

Section VI. Design Requirements

- A) Grading, erosion control practices, sediment control practices, and waterway crossings shall meet the design criteria set forth in the most recent version of the city's stormwater pollution prevention plan (SWPPP), and shall be adequate to prevent transportation of sediment from the site to the satisfaction of ADEM. Cut and fill slopes shall be *no greater than 2:1*, except as approved ADEM to meet other community or environmental objectives.
- B) Clearing and grading of natural resources, such as forests and wetlands, shall not be permitted, except when in compliance with all other chapters of this Code. Clearing techniques that retain natural vegetation and drainage patterns, as described in the SWPPP, shall be used to the satisfaction of ADEM.
- C) Clearing, except that necessary to establish sediment control devices, shall not begin until all sediment control devices have been installed and have been stabilized.
- D) Phasing shall be required on all sites disturbing greater than 30 acres, with the size of each phase to be established at plan review and as approved by ADEM.
- E) Erosion control requirements shall include the following:
 - 1) Soil stabilization shall be completed within *five days* of clearing or inactivity in construction.
 - 2) If seeding or another vegetative erosion control method is used, it shall become established within *two weeks* or ADEM may require the site to be reseeded or a non-vegetative option employed.
 - 3) Special techniques that meet the design criteria outlined in the SWPPP on steep slopes or in drainage ways shall be used to ensure stabilization.
 - 4) Soil stockpiles must be stabilized or covered at the end of each workday. Silt fence may be used. Silt basins may also be used.
 - 5) The entire site must be stabilized, using a heavy mulch layer or another method that does not require germination to control erosion, at the close of the construction season.
 - 6) Techniques shall be employed to prevent the blowing of dust or sediment from the site.
 - 7) Techniques that divert upland runoff past disturbed slopes shall be employed.
- F) Sediment controls requirements shall include
 - 1) Settling basins, sediment traps, or tanks and perimeter controls.
 - 2) Settling basins that are designed in a manner that allows adaptation to provide

long term stormwater management, if required by ADEM.

- 3) Protection for adjacent properties by the use of a vegetated buffer strip in combination with perimeter controls. The buffer strip shall be used only if required by the City Engineer.

G) Waterway and watercourse protection requirements shall include

- 1) A temporary stream crossing installed and approved by The Army Corp of Engineers if a wet watercourse will be crossed regularly during construction
- 2) Stabilization of the watercourse channel before, during, and after any in-channel work
- 3) All on-site stormwater conveyance channels designed according to the criteria outlined in the SWPPP.
- 4) Stabilization adequate to prevent erosion located at the outlets of all pipes and paved channels

H Construction site access requirements shall include

- 1) a temporary access road provided at all sites
- 2) other measures required by ADEM in order to ensure that sediment is not tracked onto public streets by construction vehicles or washed into storm drains

Section VII. Inspection

A) ADEM or designated agent shall make inspections as hereinafter required and either shall approve that portion of the work completed or shall notify the permittee wherein the work fails to comply with the Erosion and Sediment Control Plan as approved. Plans for grading, stripping, excavating, and filling work bearing the stamp of approval of the City Engineer shall be maintained at the site during the progress of the work. To obtain inspections, the permittee shall notify the City Engineer at least two working days before the following:

- 1) Start of construction
- 2) Installation of sediment and erosion measures
- 3) Completion of site clearing
- 4) Completion of rough grading
- 5) Completion of final grading
- 6) Close of the construction season
- 7) Completion of final landscaping

B) The permittee or his/her agent shall make regular inspections of all control measures in accordance with the inspection schedule outlined on the approved Erosion and Sediment Control Plan(s). The purpose of such inspections will be to determine the overall effectiveness of the control plan and the need for

additional control measures. All inspections shall be documented in written form and submitted to ADEM at the time interval specified in the approved permit.

- C) ADEM or its designated agent shall enter the property of the applicant as deemed necessary to make regular inspections to ensure the validity of the reports.

Section VIII. Enforcement

- A) Stop-Work Order; Revocation of Permit

In the event that any person holding a site development permit pursuant to this ordinance violates the terms of the permit or implements site development in such a manner as to materially adversely affect the health, welfare, or safety of persons residing or working in the neighborhood or development site so as to be materially detrimental to the public welfare or injurious to property or improvements in the neighborhood, ADEM may suspend or revoke the site development permit.

- B) Violation and Penalties

No person shall construct, enlarge, alter, repair, or maintain any grading, excavation, or fill, or cause the same to be done, contrary to or in violation of any terms of this ordinance. Any person violating any of the provisions of this ordinance shall be deemed guilty of a misdemeanor and each day during which any violation of any of the provisions of this ordinance is committed, continued, or permitted, shall constitute a separate offense. Upon conviction of any such violation, such person, partnership, or corporation shall be punished by a fine of not more than \$1,000.00 for each offense. In addition to any other penalty authorized by this section, any person, partnership, or corporation convicted of violating any of the provisions of this ordinance shall be required to bear the expense of such restoration.

Section IX. Separability

The provisions and sections of this ordinance shall be deemed to be separable, and the invalidity of any portion of this ordinance shall not affect the validity of the remainder.

ADOPTED this the 16th day of March, 2004.

ILLICIT DISCHARGE DETECTION AND ELIMINATION

- City of Florence Map
- Stormwater Runoff Sampling and Testing Results
- Ordinance for Illicit Discharge and Connection to Stormwater System
- List of Construction Sites Inspected by City
- Inspection Report Form
- Request for Services



SOUTHERN ENVIRONMENTAL TESTING

P.O. Box 487
3103 Northington Court
Florence, Alabama 35630

(256) 740-5532
Fax (256) 740-5529

TEST RESULTS

Larry Lynn
White, Lynn, Collins & Associates
219 W Alabama St
Florence AL 35630

Project: City of Florence
Project Number:
Sample Location: Florence, AL
Sampled By: J. Dennison
Date/Time Collected: 1/11/18 19:15

Lab Number: 1800107
Sample Type: Stormwater
Date/Time Received: 1/12/18 8:02
Date Reported: 1/26/2018

Sample No.	Client No.	Parameter	Result	Qual	Units	Report Limit	Date/Time	Method	Analys
001	23-2-11-2	Oil and Grease	<5.00		mg/L	5	1/22/18 13:25	1664A (1)	DRK
002	23-2-11-2	Solids, Total Suspended	564		mg/L	1	1/15/18 12:05	2540D (2)	KMS

pH (field) = 7.46 su

Report Approved By:

Allison Dixon

~METHOD REFERENCES~

- (1) Methods for Chemical Analysis of Water and Wastes, EPA-600/4-79-020, revised March 1993, August 1993, May 1994.
- (2) Standard Methods for the Examination of Water and Waste Water, 18th Edition, 1992
- (3) Test Methods for Evaluating Solid Wastes Physical Chemical Method SW-846, 3rd Edition, Update IV December 1996.
- (4) HACH Handbook of Water Analysis, HACH Chemical Company, 1979
- (5) Methods for the Determination of Organic Compounds in Drinking Water, EPA-600/4-88/039, Revised July, 1991, August 1995.

SOUTHERN ENVIRONMENTAL TESTING

3103 Northington Court
Florence, AL 35630

Ph: (256) 740-5532
Fax: (256) 740-5529

CHAIN-OF-CUSTODY RECORD

ANALYSIS REQUESTED

WLC

REFERRING CLIENT:

PROJECT NAME:

PROJECT #:

SAMPLE SITE:

REQUESTOR:

SAMPLED BY:

P.O. #

TURNAROUND:

SPECIAL INSTRUCTIONS:

NORMAL RUSH

LAB USE ONLY SAMPLE #	SAMPLE IDENTIFICATION	DATE	TIME	SAMPLE TYPE	GRAB	COMP	CONTAINER TYPE	# OF CONTAINERS	SAMPLE PRESERVATION	RECEIVED FOR LAB BY:	DATE	TIME
1800107-01	03-2-11-2	01/11/18	1915	SW	X		G	1	H ₂ SO ₄			
-02	03-2-11-2		1915		X		P	1	NONE			
1800108-01	03-2-11-1		1900		X		G	1	H ₂ SO ₄			
-02	03-2-11-1		1900		X		P	1	NONE			
1800109-01	03-2-11-1		1833		X		G	1	H ₂ SO ₄			
-02	03-2-11-1		1833		X		P	1	NONE			
1800110-01	03-2-10-1		1815		X		G	1	H ₂ SO ₄			
-02	03-2-10-1		1815		X		P	1	NONE			
1800111-01	03-3-10-1		2014		X		G	1	H ₂ SO ₄			
-02	03-3-10-1		2014		X		P	1	NONE			
RELINQUISHED BY:	DATE	TIME	RECEIVED BY:	DATE	TIME	RECEIVED FOR LAB BY:	DATE	TIME				
	01/12/18	0802										
RELINQUISHED BY:	DATE	TIME	RECEIVED BY:	DATE	TIME	RECEIVED FOR LAB BY:	DATE	TIME				
RELINQUISHED BY:	DATE	TIME	RECEIVED BY:	DATE	TIME	RECEIVED FOR LAB BY:	DATE	TIME				

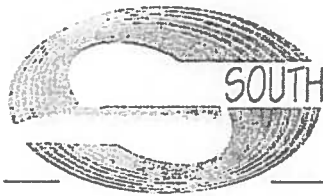
Comments: Florence spec

056
TSS
pH

7.98

11/2/18

0802



SOUTHERN ENVIRONMENTAL TESTING

P.O. Box 487
3103 Northington Court
Florence, Alabama 35630

(256) 740-5532
Fax (256) 740-5529

LOG-IN CHECKLIST

Rev 150223

Cooler Received/Opened: 11/2/18 0802 Lab No: 1800107-0112

Courier: SET FedEx UPS USPS Customer Other Drop box

Thermometer Used: EnnoLogic IR 201609001507 Fisher IR 61857065 Other _____

- 1. Were custody seals on outside of cooler? YES...NO...NA
- 2. Were the seals intact, signed, and dated correctly? YES...NO...NA
- 3. Temperature of rep. sample or temp. blank when opened: 4.4 °C (should be above freezing to 6°C)
- 4. If Item #3 temp is 0°C or less, was there evidence of freezing.)? YES...NO...NA
- 5. Was there a Chain-Of-Custody form? YES...NO...NA

I certify that I opened the cooler and answered questions 1-5 (initial) Fy

- 6. Were custody seals on containers? YES...NO...NA
- 7. Were these seals signed and dated correctly? YES...NO...NA
- 8. Packing material used? Bubblewrap Peanuts Vermiculite Foam Paper Other None
- 9. Cooling process? Ice Ice-pack Dry ice Other None
- 10. Did all containers arrive in good condition (unbroken)? YES...NO...NA
- 11. Were all container labels complete (#, date, analysis, pres, etc.)? YES...NO...NA
- 12. Did all container labels agree with C-O-C? YES...NO...NA
- 13. a. Were VOA vials received? YES...NO...NA
- b. Was observable headspace present? YES...NO...NA
- 14. Was there a Trip Blank in this cooler? YES...NO...NA

I certify that I unloaded the cooler and answered questions 6-14 (initial) Fy

- 15. a. On preserved bottles, did pH test strips indicate correct pH level reached? YES...NO...NA
- b. If NO, was preservative added? YES...NO...Record lot no. added: HNO3 _____ H2SO _____
- c. Did the bottle label indicate correct preservative was used? YES...NO...NA
- 16. Was residual chlorine (TRC) present? YES...NO...NA

I certify that I checked TRC and pH per SOPs and answered questions 15-16 (initial) Fy

- 17. Was the C-O-C properly filled out (ink, signed, etc.)? YES...NO...NA
- 18. Did you sign the custody papers in the received by lab area? YES...NO...NA
- 19. Correct containers used for analysis requested? YES...NO...NA
- 20. Sufficient amount of sample received? YES...NO...NA
- 21. All samples arrive within method holding time? YES...NO...NA

I certify that I entered this project in the LIMS and answered questions 17-21 (initial) Fy

I certify that I attached a label with the unique LIMS number to each container (initial) Fy

22. Were there Non-Conformance issues at login? YES...NO... Note action taken:



TEST RESULTS

Larry Lynn
White, Lynn, Collins & Associates
219 W Alabama St
Florence AL 35630

Project: City of Florence
Project Number:
Sample Location: Florence, AL
Sampled By: J. Dennison
Date/Time Collected: 1/11/18 19:00

Lab Number: 1800108
Sample Type: Stormwater
Date/Time Received: 1/12/18 8:02
Date Reported: 1/26/2018

Sample No.	Client No.	Parameter	Result	Qual	Units	Report Limit	Date/Time	Method	Analys
001	23-2-11-1	Oil and Grease	<5.00		mg/L	5	1/25/18 10:30	1664A (1)	DRK
002	23-2-11-1	Solids, Total Suspended	1.50		mg/L	1	1/15/18 12:05	2540D (2)	KMS

pH (field) = 7.14 su

Report Approved By:

Allison Dixon

~METHOD REFERENCES~

- (1) Methods for Chemical Analysis of Water and Wastes, EPA-600/4-79-020, revised March 1993, August 1993, May 1994.
- (2) Standard Methods for the Examination of Water and Waste Water, 18th Edition, 1992
- (3) Test Methods for Evaluating Solid Wastes Physical Chemical Method SW-846, 3rd Edition, Update IV December 1996.
- (4) HACH Handbook of Water Analysis, HACH Chemical Company, 1979
- (5) Methods for the Determination of Organic Compounds in Drinking Water, EPA-600/4-88/039, Revised July, 1991, August 1995.



TEST RESULTS

Larry Lynn
White, Lynn, Collins & Associates
219 W Alabama St
Florence AL 35630

Project: City of Florence
Project Number:
Sample Location: Florence, AL
Sampled By: J. Dennison
Date/Time Collected: 1/11/18 18:33

Lab Number: 1800109
Sample Type: Stormwater
Date/Time Received: 1/12/18 8:02
Date Reported: 1/26/2018

Sample No.	Client No.	Parameter	Result	Qual	Units	Report Limit	Date/Time	Method	Analys
001	36-2-11-1	Oil and Grease	<5.00		mg/L	5	1/25/18 10:30	1664A (1)	DRK
002	36-2-11-1	Solids, Total Suspended	29.0		mg/L	1	1/15/18 12:05	2540D (2)	KMS

pH (field) = 7.31 su

Report Approved By:

Allison Dixon

~METHOD REFERENCES~

- (1) Methods for Chemical Analysis of Water and Wastes, EPA-600/4-79-020, revised March 1993, August 1993, May 1994.
- (2) Standard Methods for the Examination of Water and Waste Water, 18th Edition, 1992
- (3) Test Methods for Evaluating Solid Wastes Physical Chemical Method SW-846, 3rd Edition, Update IV December 1996.
- (4) HACH Handbook of Water Analysis, HACH Chemical Company, 1979
- (5) Methods for the Determination of Organic Compounds in Drinking Water, EPA-600/4-88/039, Revised July, 1991, August 1995.



SOUTHERN ENVIRONMENTAL TESTING

P.O. Box 487
3103 Northington Court
Florence, Alabama 35630

(256) 740-5532
Fax (256) 740-5529

TEST RESULTS

Larry Lynn
White, Lynn, Collins & Associates
219 W Alabama St
Florence AL 35630

Project: City of Florence
Project Number:
Sample Location: Florence, AL
Sampled By: J. Dennison
Date/Time Collected: 1/11/18 18:15

Lab Number: 1800110
Sample Type: Stormwater
Date/Time Received: 1/12/18 8:02
Date Reported: 1/26/2018

Sample No.	Client No.	Parameter	Result	Qual	Units	Report Limit	Date/Time	Method	Analys
001	31-2-10-1	Oil and Grease	<5.00		mg/L	5	1/25/18 10:30	1664A (1)	DRK
002	31-2-10-1	Solids, Total Suspended	168		mg/L	1	1/15/18 12:05	2540D (2)	KMS

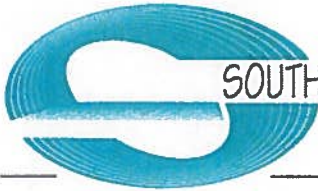
pH (field) = 7.09 su

Report Approved By:

Allison Dixon

~METHOD REFERENCES~

- (1) Methods for Chemical Analysis of Water and Wastes, EPA-600/4-79-020, revised March 1993, August 1993, May 1994.
- (2) Standard Methods for the Examination of Water and Waste Water, 18th Edition, 1992
- (3) Test Methods for Evaluating Solid Wastes Physical Chemical Method SW-846, 3rd Edition, Update IV December 1996.
- (4) HACH Handbook of Water Analysis, HACH Chemical Company, 1979
- (5) Methods for the Determination of Organic Compounds in Drinking Water, EPA-600/4-88/039, Revised July, 1991, August 1995.



SOUTHERN ENVIRONMENTAL TESTING

P.O. Box 487
3103 Northington Court
Florence, Alabama 35630

(256) 740-5532
Fax (256) 740-5529

TEST RESULTS

Larry Lynn
White, Lynn, Collins & Associates
219 W Alabama St
Florence AL 35630

Project: City of Florence
Project Number:
Sample Location: Florence, AL
Sampled By: J. Dennison
Date/Time Collected: 1/11/18 20:14

Lab Number: 1800111
Sample Type: Stormwater
Date/Time Received: 1/12/18 8:02
Date Reported: 1/26/2018

Sample No.	Client No.	Parameter	Result	Qual	Units	Report Limit	Date/Time	Method	Analys
001	6-3-10-1	Oil and Grease	<5.00		mg/L	5	1/25/18 10:30	1664A (1)	DRK
002	6-3-10-1	Solids, Total Suspended	30.0		mg/L	1	1/18/18 16:00	2540D (2)	SJP

pH (field) = 7.58 su

Report Approved By:

Allison Dixon

~METHOD REFERENCES~

- (1) Methods for Chemical Analysis of Water and Wastes, EPA-600/4-79-020, revised March 1993, August 1993, May 1994.
- (2) Standard Methods for the Examination of Water and Waste Water, 18th Edition, 1992
- (3) Test Methods for Evaluating Solid Wastes Physical Chemical Method SW-846, 3rd Edition, Update IV December 1996.
- (4) HACH Handbook of Water Analysis, HACH Chemical Company, 1979
- (5) Methods for the Determination of Organic Compounds in Drinking Water, EPA-600/4-88/039, Revised July, 1991, August 1995.



TEST RESULTS

Larry Lynn
White, Lynn, Collins & Associates
219 W Alabama St
Florence AL 35630

Project: City of Florence
Project Number:
Sample Location: Florence, AL
Sampled By: J. Dennison
Date/Time Collected: 1/11/18 18:41

Lab Number: 1800112
Sample Type: Stormwater
Date/Time Received: 1/12/18 8:02
Date Reported: 1/26/2018

Sample No.	Client No.	Parameter	Result	Qual	Units	Report Limit	Date/Time	Method	Analys
001	25-2-11-1	Oil and Grease	<5.00		mg/L	5	1/25/18 10:30	1664A (1)	DRK
002	25-2-11-1	Solids, Total Suspended	25.0		mg/L	1	1/18/18 16:00	2540D (2)	SJP

pH (field) = 7.10 su

Report Approved By:

Allison Dixon

~METHOD REFERENCES~

- (1) Methods for Chemical Analysis of Water and Wastes, EPA-600/4-79-020, revised March 1993, August 1993, May 1994.
- (2) Standard Methods for the Examination of Water and Waste Water, 18th Edition, 1992
- (3) Test Methods for Evaluating Solid Wastes Physical Chemical Method SW-846, 3rd Edition, Update IV December 1996.
- (4) HACH Handbook of Water Analysis, HACH Chemical Company, 1979
- (5) Methods for the Determination of Organic Compounds in Drinking Water, EPA-600/4-88/039, Revised July, 1991, August 1995.

SOUTHERN ENVIRONMENTAL TESTING

3103 Northlinton Court
 Florence, AL 35630
 Ph: (256) 740-5532
 Fax: (256) 740-5529

CHAIN-OF-CUSTODY RECORD

REFERRING CLIENT:		PROJECT NAME:		PROJECT #:	
WLL		City of Florence Stormwater			
LAB USE ONLY		SAMPLE SITE:		REQUESTOR:	
SAMPLE #		Florence, AL		P.O. #	
SAMPLE IDENTIFICATION		SAMPLED BY:		TURNAROUND:	
1800112-01		J. Demaris		NORMAL <input type="checkbox"/> RUSH <input type="checkbox"/>	
-02		25-2-11-1		SPECIAL INSTRUCTIONS:	
DATE		DATE		CONTAINER TYPE	
02-2-11-1		02/11/18		G	
TIME		TIME		# OF CONTAINERS	
				1	
RECEIVED BY:		RECEIVED BY:		SAMPLE PRESERVATION	
				None	
DATE		DATE		RECEIVED FOR LAB BY:	
02/12/18		02/12/18		Follow you	
TIME		TIME		DATE	
08:52		08:02		11/2/18	
RECEIVED BY:		RECEIVED BY:		TIME	
				0802	
RECEIVED BY:		RECEIVED BY:		ANALYSIS REQUESTED	
				OTG	
				TSS	
				H ₂	
				7.10	

**ORDINANCE
FOR
ILLICIT DISCHARGE AND CONNECTION TO
THE STORMWATER SYSTEM**

ORDINANCE #2004-17

BE IT ORDAINED BY THE CITY COUNCIL OF THE CITY OF FLORENCE, ALABAMA
as follows:

SECTION 1. PURPOSE/INTENT.

The purpose of this ordinance is to provide for the health, safety, and general welfare of the citizens of Florence through the regulation of non-storm water discharges to the storm drainage system to the maximum extent practicable as required by federal and state law. This ordinance establishes methods for controlling the introduction of pollutants into the municipal separate storm sewer system (MS4) in order to comply with requirements of the National Pollutant Discharge Elimination System (NPDES) permit process. The objectives of this ordinance are:

- (1) To regulate the contribution of pollutants to the municipal separate storm sewer system (MS4) by stormwater discharges by any user
- (2) To prohibit Illicit Connections and Discharges to the municipal separate storm sewer system
- (3) To establish legal authority to carry out all inspection, surveillance and monitoring procedures necessary to ensure compliance with this ordinance

SECTION 2. DEFINITIONS

For the purposes of this ordinance, the following shall mean:

Authorized Enforcement Agency: employees or designees of the director of the municipal agency designated to enforce this ordinance.

Best Management Practices (BMPs): schedules of activities, prohibitions of practices, general good house keeping practices, pollution prevention and educational practices, maintenance procedures, and other management practices to prevent or reduce the discharge of pollutants directly or indirectly to stormwater, receiving waters, or stormwater conveyance systems. BMPs also include treatment practices, operating procedures, and practices to control site runoff, spillage or leaks, sludge or water disposal, or drainage from raw materials storage.

Clean Water Act. The federal Water Pollution Control Act (33 U.S.C. § 1251 et seq.), and any subsequent amendments thereto.

Construction Activity. Activities subject to NPDES Construction Permits. Currently these include

construction projects resulting in land disturbance of 1 acre or more. Beginning in March 2003, NPDES Storm Water Phase II permits will be required for construction projects resulting in land disturbance of 1 acre or more. Such activities include but are not limited to clearing and grubbing, grading, excavating, and demolition.

Hazardous Materials. Any material, including any substance, waste, or combination thereof, which because of its quantity, concentration, or physical, chemical, or infectious characteristics may cause, or significantly contribute to, a substantial presence or potential hazard to human health, safety, property, or the environment when improperly treated, stored, transported, disposed of, or otherwise managed.

Illegal Discharge. Any direct or indirect non-storm water discharge to the storm drain system, which is not covered under a proper permit.

Illicit Connections. An illicit connection is defined as either of the following:

Any drain or conveyance, whether on the surface or subsurface, which allows an illegal discharge to enter the storm drain system including but not limited to any conveyances which allow any non-storm water discharge including sewage, process wastewater, and wash water to enter the storm drain system and any connections to the storm drain system from indoor drains and sinks, regardless of whether said drain or connection had been previously allowed, permitted, or approved by an authorized enforcement agency or, any drain or conveyance connected from a commercial or industrial land use to the storm drain system which has not been documented in plans, maps, or equivalent records and approved by an authorized enforcement agency.

Industrial Activity. Activities subject to NPDES Industrial Permits as defined in 40 CFR, Section 122.26 (b)(14).

National Pollutant Discharge Elimination System (NPDES) Storm Water Discharge Permit. Means a permit issued by EPA (or by a State under authority delegated pursuant to 33 USC § 1342(b)) that authorizes the discharge of pollutants to waters of the United States, whether the permit is applicable on an individual, group, or general area-wide basis.

Non-Storm Water Discharge. Any discharge to the storm drain system that is not composed entirely of storm water.

Person. Means any individual, association, organization, partnership, firm, corporation or other entity recognized by law and acting as either the owner or as the owner's agent.

Pollutant. Anything which causes or contributes to pollution. Pollutants may include, but are not limited to: paints, varnishes, and solvents; oil and other automotive fluids; non-hazardous liquid and solid wastes and yard wastes; refuse, rubbish, garbage, litter, or other discarded or abandoned objects, ordinances, and accumulations, so that same may cause or contribute to pollution; floatables; pesticides, herbicides, and fertilizers; hazardous substances and wastes; sewage, fecal coliform and pathogens; dissolved and particulate metals; animal wastes; wastes and residues that result from constructing a building or structure; and noxious or offensive matter of any kind.

Premises. Any building, lot, parcel of land, or portion of land whether improved or unimproved including adjacent sidewalks and parking strips.

Storm Drainage System. Publicly-owned facilities by which storm water is collected and/or conveyed, including but not limited to any roads with drainage systems, municipal streets, gutters, curbs, inlets, piped storm drains, pumping facilities, retention and detention basins, natural and human-made or altered drainage channels, reservoirs, and other drainage structures.

Storm Water. Any surface flow, runoff, and drainage consisting entirely of water from any form of natural precipitation, and resulting from such precipitation.

Stormwater Pollution Prevention Plan. A document which describes the Best Management Practices and activities to be implemented by a person or business to identify sources of pollution or contamination at a site and the actions to eliminate or reduce pollutant discharges to Stormwater, Stormwater Conveyance Systems, and/or Receiving Waters to the Maximum Extent Practicable.

Wastewater means any water or other liquid, other than uncontaminated storm water, discharged from a facility.

SECTION 3. APPLICABILITY.

This ordinance shall apply to all water entering the storm drain system generated on any developed and undeveloped lands unless explicitly exempted by an authorized enforcement agency.

SECTION 4. RESPONSIBILITY FOR ADMINISTRATION.

The City of Florence shall administer, implement, and enforce the provisions of this ordinance. Any powers granted or duties imposed upon the authorized enforcement agency may be delegated in writing by the Director of the authorized enforcement agency to persons or entities acting in the beneficial interest of or in the employ of the agency.

SECTION 5. SEVERABILITY.

The provisions of this ordinance are hereby declared to be severable. If any provision, clause, sentence, or paragraph of this Ordinance or the application thereof to any person, establishment, or circumstances shall be held invalid, such invalidity shall not affect the other provisions or application of this Ordinance.

SECTION 6. ULTIMATE RESPONSIBILITY.

The standards set forth herein and promulgated pursuant to this ordinance are minimum standards; therefore this ordinance does not intend nor imply that compliance by any person will ensure that there will be no contamination, pollution, nor unauthorized discharge of pollutants.

SECTION 7. DISCHARGE PROHIBITIONS.

Prohibition of Illegal Discharges.

No person shall discharge or cause to be discharged into the municipal storm drain system or watercourses any materials, including but not limited to pollutants or waters containing any pollutants that cause or contribute to a violation of applicable water quality standards, other than storm water.

The commencement, conduct or continuance of any illegal discharge to the storm drain system is prohibited except as described as follows:

- (1) The following discharges are exempt from discharge prohibitions established by this ordinance: water line flushing or other potable water sources, landscape irrigation or lawn watering, diverted stream flows, rising ground water, ground water infiltration to storm drains, uncontaminated pumped ground water, foundation or footing drains (not including active groundwater dewatering systems), crawl space pumps, air conditioning condensation, springs, non-commercial washing of vehicles, natural riparian habitat or wet-land flows, swimming pools (if dechlorinated - typically less than one PPM chlorine), fire fighting activities, and any other water source not containing Pollutants.
- (2) Discharges specified in writing by the authorized enforcement agency as being necessary to protect public health and safety.
- (3) Dye testing is an allowable discharge, but requires a verbal notification to the authorized enforcement agency prior to the time of the test.
- (4) The prohibition shall not apply to any non-storm water discharge permitted under an NPDES permit, waiver, or waste discharge order issued to the discharger and administered under the authority of the Federal Environmental Protection Agency, provided that the discharger is in full compliance with all requirements of the permit, waiver, or order and other applicable laws and regulations, and provided that written approval has been granted for any discharge to the storm drain system.

Prohibition of Illicit Connections.

- (1) The construction, use, maintenance or continued existence of illicit connections to the storm drain system is prohibited.
- (2) This prohibition expressly includes, without limitation, illicit connections made in the past, regardless of whether the connection was permissible under law or practices applicable or prevailing at the time of connection.
- (3) A person is considered to be in violation of this ordinance if the person connects a line conveying sewage to the MS4, or allows such a connection to continue.

SECTION 8. SUSPENSION OF MS4 ACCESS.

Suspension due to Illicit Discharges in Emergency Situations

The City of Florence may, without prior notice, suspend MS4 discharge access to a person when such suspension is necessary to stop an actual or threatened discharge which presents or may present imminent and substantial danger to the environment, or to the health or welfare of persons, or to the MS4 or Waters of the United States. If the violator fails to comply with a suspension order issued in an emergency, the authorized enforcement agency may take such steps as deemed necessary to prevent or minimize damage to the MS4 or Waters of the United States, or to minimize danger to persons.

Suspension due to the Detection of Illicit Discharge

Any person discharging to the MS4 in violation of this ordinance may have their MS4 access terminated if such termination would abate or reduce an illicit discharge. The authorized enforcement agency will notify a violator of the proposed termination of its MS4 access. The violator may petition the authorized enforcement agency for a reconsideration and hearing.

A person commits an offense if the person reinstates MS4 access to premises terminated pursuant to this Section, without the prior approval of the authorized enforcement agency.

SECTION 9. INDUSTRIAL OR CONSTRUCTION ACTIVITY DISCHARGES.

Any person subject to an industrial or construction activity NPDES storm water discharge permit shall comply with all provisions of such permit. Proof of compliance with said permit may be required in a form acceptable to the City of Florence prior to the allowing of discharges to the MS4.

SECTION 10. MONITORING OF DISCHARGES.

1. Applicability.

This section applies to all facilities that have storm water discharges associated with industrial activity, including construction activity.

2. Access to Facilities.

- (1) The City of Florence shall be permitted to enter and inspect facilities subject to regulation under this ordinance as often as may be necessary to determine compliance with this ordinance. If a discharger has security measures in force which require proper identification and clearance before entry into its premises, the discharger shall make the necessary arrangements to allow access to representatives of the authorized enforcement agency.
- (2) Facility operators shall allow the The City of Florence ready access to all parts of the premises for the purposes of inspection, sampling, examination and copying of records that must be kept under the conditions of an NPDES permit to discharge storm water, and the performance of any additional duties as defined by state and federal law.
- (3) The City of Florence shall have the right to set up on any permitted facility such devices as are necessary in the opinion of the authorized enforcement agency to conduct monitoring and/or sampling of the facility's storm water discharge.
- (4) The City of Florence has the right to require the discharger to install monitoring equipment as necessary. The facility's sampling and monitoring equipment shall be maintained at all times in a safe and proper operating condition by the discharger at its own expense. All devices used to measure stormwater flow and quality shall be calibrated to ensure their accuracy.
- (5) Any temporary or permanent obstruction to safe and easy access to the facility to be inspected and/or sampled shall be promptly removed by the operator at the written or oral request of the

City of Florence and shall not be replaced. The costs of clearing such access shall be borne by the operator.

- (6) Unreasonable delays in allowing the City of Florence access to a permitted facility is a violation of a storm water discharge permit and of this ordinance. A person who is the operator of a facility with a NPDES permit to discharge storm water associated with industrial activity commits an offense if the person denies the authorized enforcement agency reasonable access to the permitted facility for the purpose of conducting any activity authorized or required by this ordinance.
- (7) If the City of Florence has been refused access to any part of the premises from which stormwater is discharged, and he/she is able to demonstrate probable cause to believe that there may be a violation of this ordinance, or that there is a need to inspect and/or sample as part of a routine inspection and sampling program designed to verify compliance with this ordinance or any order issued hereunder, or to protect the overall public health, safety, and welfare of the community, then the authorized enforcement agency may seek issuance of a search warrant from any court of competent jurisdiction.

SECTION 11. REQUIREMENT TO PREVENT, CONTROL, AND REDUCE STORM WATER POLLUTANTS BY THE USE OF BEST MANAGEMENT PRACTICES.

City of Florence will adopt requirements identifying Best Management Practices for any activity, operation, or facility which may cause or contribute to pollution or contamination of storm water, the storm drain system, or waters of the U.S. The owner or operator of a commercial or industrial establishment shall provide, at their own expense, reasonable protection from accidental discharge of prohibited materials or other wastes into the municipal storm drain system or watercourses through the use of these structural and non-structural BMPs. Further, any person responsible for a property or premise, which is, or may be, the source of an illicit discharge, may be required to implement, at said person's expense, additional structural and non-structural BMPs to prevent the further discharge of pollutants to the municipal separate storm sewer system. Compliance with all terms and conditions of a valid NPDES permit authorizing the discharge of storm water associated with industrial activity, to the extent practicable, shall be deemed compliance with the provisions of this section. These BMPs shall be part of a stormwater pollution prevention plan (SWPP) as necessary for compliance with requirements of the NPDES permit.

SECTION 12. NOTIFICATION OF SPILLS.

Notwithstanding other requirements of law, as soon as any person responsible for a facility or operation, or responsible for emergency response for a facility or operation has information of any known or suspected release of materials which are resulting or may result in illegal discharges or pollutants discharging into storm water, the storm drain system, or water of the U.S. said person shall take all necessary steps to ensure the discovery, containment, and cleanup of such release. In the event of such a release of hazardous materials said person shall immediately notify emergency response agencies of the occurrence via emergency dispatch services. In the event of a release of non-hazardous materials, said person shall notify the authorized enforcement agency in person or by phone or facsimile no later than the next business day. Notifications in person or by phone shall be confirmed by written notice addressed and mailed to the City of Florence within three business days

of the phone notice. If the discharge of prohibited materials emanates from a commercial or industrial establishment, the owner or operator of such establishment shall also retain an on-site written record of the discharge and the actions taken to prevent its recurrence. Such records shall be retained for at least three years.

SECTION 13. ENFORCEMENT.

1. Notice of Violation.

Whenever the City of Florence finds that a person has violated a prohibition or failed to meet a requirement of this Ordinance, the authorized enforcement agency may order compliance by written notice of violation to the responsible person. Such notice may require without limitation:

- (a) The performance of monitoring, analyses, and reporting;
- (b) The elimination of illicit connections or discharges;
- (c) That violating discharges, practices, or operations shall cease and desist;
- (d) The abatement or remediation of storm water pollution or contamination hazards and the restoration of any affected property; and
- (e) Payment of a fine to cover administrative and remediation costs; and
- (f) The implementation of source control or treatment BMPs.

If abatement of a violation and/or restoration of affected property is required, the notice shall set forth a deadline within which such redemption or restoration must be completed. Said notice shall further advise that, should the violator fail to remediate or restore within the established deadline, the work will be done by a designated governmental agency or a contractor and the expense thereof shall be charged to the violator.

SECTION 14. APPEAL OF NOTICE OF VIOLATION.

Any person receiving a Notice of Violation may appeal the determination of the authorized enforcement agency. The notice of appeal must be received within 10 days from the date of the Notice of Violation. Hearing on the appeal before the appropriate authority or his/her designee shall take place within 15 days from the date of receipt of the notice of appeal. The decision of the municipal authority or their designee shall be final.

SECTION 15. ENFORCEMENT MEASURES AFTER APPEAL.

If the violation has not been corrected pursuant to the requirements set forth in the Notice of Violation, or, in the event of an appeal, within 30 days of the decision of the municipal authority upholding the decision of the authorized enforcement agency, then representatives of the authorized enforcement agency shall enter upon the subject private property and are authorized to take any and all measures necessary to abate the violation and/or restore the property. It shall be unlawful for any person, owner, agent or person in possession of any premises to refuse to allow the government agency or designated contractor to enter upon the premises for the purposes set forth above.

SECTION 16. COST OF ABATEMENT OF THE VIOLATION.

Within 15 days after abatement of the violation, the owner of the property will be notified of the cost of abatement, including administrative costs. The property owner may file a written protest objecting to the amount of the assessment within 5 days. If the amount due is not paid within a timely manner

as determined by the decision of the municipal authority or by the expiration of the time in which to file an appeal, the charges shall become a special assessment against the property and shall constitute a lien on the property for the amount of the assessment.

Any person violating any of the provisions of this article shall become liable to the city by reason of such violation. The liability shall be paid in not more than 12 equal payments. Interest at the rate of 5 percent per annum shall be assessed on the balance beginning on the 30th day following discovery of the violation.

SECTION 17. INJUNCTIVE RELIEF.

It shall be unlawful for any person to violate any provision or fail to comply with any of the requirements of this Ordinance. If a person has violated or continues to violate the provisions of this ordinance, the authorized enforcement agency may petition for a preliminary or permanent injunction restraining the person from activities which would create further violations or compelling the person to perform abatement or remediation of the violation.

SECTION 18. COMPENSATORY ACTION.

In lieu of enforcement proceedings, penalties, and remedies authorized by this Ordinance, the authorized enforcement agency may impose upon a violator alternative compensatory actions, such as storm drain stenciling, attendance at compliance workshops, creek cleanup, etc.

SECTION 19. VIOLATIONS DEEMED A PUBLIC NUISANCE.

In addition to the enforcement processes and penalties provided, any condition caused or permitted to exist in violation of any of the provisions of this Ordinance is a threat to public health, safety, and welfare, and is declared and deemed a nuisance, and may be summarily abated or restored at the violator's expense, and/or a civil action to abate, enjoin, or otherwise compel the cessation of such nuisance may be taken.

SECTION 20. CRIMINAL PROSECUTION.

Any person that has violated or continues to violate this ordinance shall be liable to criminal prosecution to the fullest extent of the law, and shall be subject to a criminal penalty of \$1,000.00 dollars per violation per day and/or imprisonment for a period of time not to exceed 30 days.

The authorized enforcement agency may recover all attorney's fees court costs and other expenses associated with enforcement of this ordinance, including sampling and monitoring expenses.

SECTION 21. REMEDIES NOT EXCLUSIVE.

The remedies listed in this ordinance are not exclusive of any other remedies available under any applicable federal, state or local law and it is within the discretion of the authorized enforcement agency to seek cumulative remedies.

SECTION 22. ADOPTION OF ORDINANCE.

This ordinance shall be in full force and effect (30) days after its final passage and adoption. All prior ordinances and parts of ordinances in conflict with this ordinance are hereby repealed.

ADOPTED this the 16th day of March, 2004.



CITY of FLORENCE, ALABAMA

Engineering Department

2017-2018 Monthly Site Inspections

Bentbrook
Bimbo Bakeries
Clark Gas
Creekview Village Apartment
Crosspoint Apartments
Cypress Creek Manor
Deerfield Apartments
Glendale Ave Storage Units
Hunters Ridge
Industrial Park Substation
JDG Investment (SkyZone)
Lauderdale County Animal Shelter
Mars Hill Football Field
Meadows
Midtown Plaza
North Alabama Medical Center
Old Hickory
Parkway Industrial Sites
Riverhill School
Simpson Wrecker Service
Student Parking Lot Florence High School
Super Sonic Car Wash
Underwood Baptist Church
Wade Gilchirst (Industrial Park)

Memo to File (April 30, 2018)

There was a rainfall event exceeding 1-inch on Sunday, April 22, 2018. It rained 4 of the five days during the week (Monday-Friday, April 23-27, 2018).

Cypress Creek Manor

Called and talked to Jerry King (QCI) about Cypress Creek Manor and our inspection of Monday, April 23, 2018 (Note: Silt was overtopping silt fences at several locations). He indicated that he was addressing the issue. The phone call was made on Friday, April 27, 2018 (he mentioned that it had rained most of week).

Site adjacent to the Meadows

Visited site on Monday, April 23, 2018. Called C&M testing on Friday, April 27, 2018 and left message. Talked to Tracy on Monday, April 30, 2018 and informed her that sediment was getting into the creek. She indicated that she would address it.

Bill Batson

INSPECTION REPORT

Sheet ___ of ___

Project Name: _____ File No. _____

Inspection Date: _____ Time: _____ Inspected by: _____

STAGE OF CONSTRUCTION

Pre-Construction Conference Rough Grading Finish Grading
 Clearing and Grubbing Building Construction Final Stabilization

INSPECTION CHECKLIST

Yes	No	NA	
<input type="checkbox"/>	<input type="checkbox"/>	<input type="checkbox"/>	Have all denuded areas requiring temporary or permanent stabilization been stabilized? Seeded? yes/no Mulched? yes/no Graveled? yes/no
<input type="checkbox"/>	<input type="checkbox"/>	<input type="checkbox"/>	Are soil stock piles adequately stabilized with seeding and/or sediment trapping measures?
<input type="checkbox"/>	<input type="checkbox"/>	<input type="checkbox"/>	Does permanent vegetation provide adequate stabilization?
<input type="checkbox"/>	<input type="checkbox"/>	<input type="checkbox"/>	Have sediment trapping facilities been constructed as a first step in LDA?
<input type="checkbox"/>	<input type="checkbox"/>	<input type="checkbox"/>	For perimeter sediment trapping measures, are earthen structures stabilized?
<input type="checkbox"/>	<input type="checkbox"/>	<input type="checkbox"/>	Are sediment basins installed where needed?
<input type="checkbox"/>	<input type="checkbox"/>	<input type="checkbox"/>	Are finished cut and fill slopes adequately stabilized?
<input type="checkbox"/>	<input type="checkbox"/>	<input type="checkbox"/>	Are on-site channels and outlets adequately stabilized?
<input type="checkbox"/>	<input type="checkbox"/>	<input type="checkbox"/>	Do all operational storm sewer inlets have adequate inlet protection?
<input type="checkbox"/>	<input type="checkbox"/>	<input type="checkbox"/>	Are stormwater conveyance channels adequately stabilized with channel lining and/or outlet protection?
<input type="checkbox"/>	<input type="checkbox"/>	<input type="checkbox"/>	Is in-stream construction conducted using measures to minimize channel damage?
<input type="checkbox"/>	<input type="checkbox"/>	<input type="checkbox"/>	Are temporary stream crossings of non-erodible material installed where applicable?
<input type="checkbox"/>	<input type="checkbox"/>	<input type="checkbox"/>	Is necessary restabilization of in-stream construction complete?
<input type="checkbox"/>	<input type="checkbox"/>	<input type="checkbox"/>	Are utility trenches stabilized properly?
<input type="checkbox"/>	<input type="checkbox"/>	<input type="checkbox"/>	Are soil and mud kept off public roadways at intersections with site access roads?
<input type="checkbox"/>	<input type="checkbox"/>	<input type="checkbox"/>	Have all temporary control structures that are no longer needed been removed?
<input type="checkbox"/>	<input type="checkbox"/>	<input type="checkbox"/>	Have all control structure repairs and sediment removal been performed?
<input type="checkbox"/>	<input type="checkbox"/>	<input type="checkbox"/>	Are properties and waterways downstream from development adequately protected from Erosion and sediment deposition due to increases in peak stormwater runoff?

Comments: _____

Verbal/Written notification given to: _____

Report by: _____ Date: _____

Work Order Information

Date 4/24/2018
Work Order Number 1402
Type Drainage
Customer First Name Greg
Customer Last Name McCanless
Requested by: Greg McCanless
Customer Address 209 Creekside Drive
Customer e-mail
Customer Phone Numbers 256-627-1555
Date Received 4/13/2018
Work Order Date 4/24/2018
Location Description Winchester (RFS #5086)
Work Description Please schedule a crew to place a new concrete lid on the catch basin and clean it out. It appears to be filled with sediment.
Status Completed
Priority Medium
Street Department Contact Terry Pitman
City Engineering Department Contact Bill Batson
Work Completed 4/25/2018

Notes

Date	Entered By	Note
2018-04-25	Doggett, Paula	The lid at 209 Creekside was repositioned and the box at 201 Creekside was cleaned out and the lid was replaced (broken) per M. Richey/Storm Drain Crew. pgd
2018-04-24	Hunt, Beth	emailed to: David Koonce, Jennifer Threet, Paula Doggett, Terry Pitman

Signature: _____

Date: _____

Request For Services

ID:: 5091 Date Received:: 4/19/2018 Old ID#:: Type:: Ditch

Contact Name:: Kim Dixon

Organization Name:: citizen

Address:: unknown

Florence AL 35630

Home Phone:: Work Phone::

Fax Number:: Mobile Phone:: 256-394-9201

Received By:: Beth Hunt Assigned To:: Bill Batson

Description:: Street:: Hermitage Drive

Ms. Dixon wants to know who is responsible for cleaning out the ditch (trash and vegetation) along Hermitage Drive across from South Oaks Village (formerly Hermitage Hills apartments).

Response Date:: 4-20-18

Action:: Work Order # 1400

Looked at site with Mark Hatcher on Friday afternoon, April 20, 2018. Yes, there is a lot of trash in the ditch. A work order will be sent to the Street Department to clean it out. Talked to Terry Pitman on Wednesday, April 25, 2018, and he said they cleaned it out. He also said that they collected 7 to 8 bags of trash.

RFS Follow Up Information

RFS Photos

Work Order Information

Date 4/20/2018
Work Order Number 1400
Type Clean Up
Customer First Name Kim
Customer Last Name Dixon
Requested by: Kim Dixon
Customer Address unknown
Customer e-mail
Customer Phone Numbers 256-394-9201
Date Received 4/19/2018
Work Order Date 4/20/2018
Location Description Hermitage Drive (RFS #5091)
Work Description Please have a crew clean out the trash/debris from the roadside ditch at the northwest corner of Hermitage and Helton. The ditch extends to the South Oaks Village Apartments.
Status Assigned
Priority Medium
Street Department Contact Terry Pitman
City Engineering Department Contact Bill Batson
Work Completed 4/25/2018

Notes

Date	Entered By	Note
2018-04-20	Hunt, Beth	Emailed David Koonce, Jennifer Threet, Paula Doggett, Terry Pitman (gc)

4/20/18
BC

Signature:



Date: 4-20-18

POLLUTION PREVENTION/GOOD HOUSEKEEPING

- **Regulations for Municipal Operations and Stormwater Quality**
- **Rain Check Training Video Program**
- **Workshop - QCI Stormwater Management Training**
- **Meeting – AL Stormwater Associates Planning Group Meeting**
- **Monthly Storm Drain Clean-Out Report and Pictures**

REGULATIONS FOR MUNICIPAL OPERATION AND STORMWATER QUALITY

City personnel who are involved with maintenance facilities or with construction of streets, storm drainage, utility construction of any nature, parks and recreation facilities or landfill operations will hereby be required to adhere to these regulations.

MAINTENANCE OPERATIONS

All vehicle repair or maintenance facilities and/or wash areas will be managed such that no pollutants from the premises will enter the stormwater system. Spill prevention control including grease pits will be constructed to catch oil and grease. Any soil washed from a vehicle will be stockpiled for future removal from the site and properly disposed of.

The volume of pesticides, fertilizers and herbicides used on public property will be studied by the park and recreation department and/or the horticulture department. These chemicals will be used as sparingly as possible.

All city personnel who are responsible for disturbing the ground surface on a municipal project will provide adequate soil erosion controls such as silt fence, hay bales, rip rap or siltation basins. The responsible person will note for the file that proper BMP was used. This note will be kept on file by project name or number. The note will include a brief description of the BMP.

All disturbed areas will be seeded and mulched or sodded immediately after construction is complete.

Steep gradient trenches will be protected by silt fence or hay bales which will slow water velocity and reduce erosion.

Landfill personnel will employ silt fence to prevent erosion while areas of the landfill are bare. Every effort will be made to prevent solid waste from leaving the site and entering any water of the state.

All deposited material which is removed from siltation basins, inlets, storm sewers, streets, etc., will be disposed of as directed by the city stormwater management personnel.

Any storm sewer construction project will be designed using proper methods of controlling siltation which are caused by concentrating flows. Methods to reduce velocity will be employed.

The street department will limit the use of salt during inclement weather to only the amount required or better yet employ the use of other more environmentally friendly materials.

THE RAIN CHECK VIDEO

The *Rain Check* video program is available primarily in two formats: DVD and CD-ROM. How *Rain Check* is used for training will depend on which BMPs are included and how the trainer elects to present the training.

DVD FORMAT

The DVD opens with a menu of three main training options. The trainer can select the option that best fits the training needs of the employees at each facility or operation.

Option #1 Complete Program (31 minutes)

This presents all 14 chapters of training and includes basic and specialty BMP training. The following chapters are included:

- CHAPTER 1: Introduction
- CHAPTER 2: Good Housekeeping & Spill Prevention
- CHAPTER 3: Spill Control & Response
- CHAPTER 4: Vehicle Fueling
- CHAPTER 5: Vehicle & Equipment Maintenance
- CHAPTER 6: Vehicle & Equipment Washing
- CHAPTER 7: Materials Management
- CHAPTER 8: Waste Management
- CHAPTER 9: Municipal Facility Maintenance
- CHAPTER 10: Parking Lots & Streets
- CHAPTER 11: Storm Drain System Cleaning
- CHAPTER 12: Landscaping & Grounds Maintenance
- CHAPTER 13: Working Over or Near Surface Waters
- CHAPTER 14: Conclusion

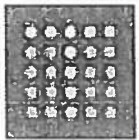
David Looney
attended ✓

Annette Menne

From: Cora Neely <cneely@thompsonengineering.com>
Sent: Friday, February 09, 2018 4:48 PM
To: Annette Menne
Subject: QCI Initial Training Class Confirmation
Attachments: 2-21-18 Confirmation (Birmingham).doc

David Looney has a confirmed seat at the Qualified Credentialed Inspector (QCI) Initial Training class that will be held in Birmingham on February 21, 2018 (details attached).

Please let me know if you need additional information. We look forward to having you in the class!



Cora Neely
Administrative Assistant

thompsonENGINEERING

Office 251.665.5457 / Fax 251.666.6422
cneely@thompsonengineering.com

2970 Cottage Hill Rd., Suite 190, Mobile, AL 36606
www.thompsonengineering.com

Disclaimer

The information contained in this communication from the sender is confidential. It is intended solely for use by the recipient and others authorized to receive it. If you are not the recipient, you are hereby notified that any disclosure, copying, distribution or taking action in relation of the contents of this information is strictly prohibited and may be unlawful. This email has gone through a thorough scan for viruses and malware.



Alabama QCI Training Certifications Database

Wednesday, January 3, 2018

- [:: Training Schedule](#)
 [:: Certified Inspectors](#)
 [:: Brochure](#)
 [:: Registration Form](#)
 [:: Partner Login](#)

Training Schedule

Training in storm water pollution prevention regulations and requirements for construction sites in Alabama. Practical instruction in the inspection and maintenance of performance-oriented best management practices (BMPs). Opportunity for contractors, engineers, developers, transportation, industrial, military, and municipal employees to become ADEM Qualified Credentialed Inspectors (QCIs).

INITIAL (8-HOUR) QCIP TRAINING COURSE DESCRIPTION: This session includes a pre-test, Power Point slides, discussion, class exercise, product demonstrations, and a final examination. The participants will receive a workbook based on the Power Point slides and a copy of the *Field Guide for Erosion and Sediment Control on Construction Sites in Alabama*. We will also provide each participant with a certificate of completion and a wallet-size card containing his/her assigned QCI number and other information. We will provide lunch, beverages, and morning and afternoon snacks. Click on the "Registration" or "Brochure" tabs for more information.

REFRESHER (4-HOUR) QCIP TRAINING COURSE DESCRIPTION: This annual continuing education class is for those students who received their QCIP Initial Training from Thompson Engineering. Updated information on storm water regulations, BMP inspection and maintenance, new-and-improved BMPs, and helpful hints about construction site inspection. Special emphasis on problem solving skills development through discussion and interaction with the instructor and other class members. Pre-test, but no final examination. Refreshments will be served.

REFRESHER (4-HOUR) QCIP ONLINE TRAINING COURSE DESCRIPTION: This course gives our students a more cost-effective, convenient option for completing the yearly continuing education requirements of the QCI program. The online refresher is accessible through an emailed link after payment is received. Click on the "Registration Form" tab to print a registration form or call 251-666-2443 for more information.

Date:	Training Class:
1/18/2018	INITIAL (8-HOUR) TRAINING - MONTGOMERY 8:30 a.m. - 4:30 p.m. Register now for a seat in our first class of 2018!
2/8/2018	INITIAL (8-HOUR) TRAINING - MOBILE 8:30 a.m. - 4:30 p.m. Join us for a great day of training at our Corporate Headquarters!
2/9/2018	REFRESHER (4-HOUR) TRAINING - MOBILE For current QCIs who received their initial training from Thompson Engineering. Call 251-666-2443 for more information.
2/21/2018	INITIAL (8-HOUR) TRAINING - BIRMINGHAM 8:30 a.m. - 4:30 p.m. Great training location with easy access to I-459/I-20 in the Metro Birmingham area!
2/22/2018	REFRESHER (4-HOUR) TRAINING - BIRMINGHAM For current QCIs who received their initial training from Thompson Engineering. Call 251-666-2443 for more information.
3/8/2018	INITIAL (8-HOUR) TRAINING - AUBURN 8:30 a.m. - 4:30 p.m. Join us for a training session on the plains of East Alabama!
3/21/2018	FIELD INSTALLER WORKSHOP-AUBURN/OPELIKA The Alabama Technology Transfer Center at Auburn University is offering a two-day Erosion & Sediment Control Hands-On Field Installer Workshop beginning on March 21 2018 and continuing through March 22, 2018. Thompson Engineering students who hold current QCI certifications may satisfy their annual refresher training requirements by participating in this event and taking a short online refresher course at a time of their choosing consistent with their expiration dates.
3/23/2018	FIELD DAY REFRESHER - OPELIKA The Alabama Technology Transfer Center at Auburn University is offering an Erosion & Sediment Control Field Day on March 23, 2018. Thompson Engineering students who hold current QCI certifications may satisfy their annual refresher training requirements by participating in this event and taking a short online refresher course at a time of their choosing consistent with their expiration dates.
3/28/2018	INITIAL (8-HOUR) TRAINING - ATHENS 8:30 a.m. - 4:30 p.m. Most convenient location for our students from North Alabama!
4/12/2018	INITIAL (8-HOUR) TRAINING - MOBILE 8:30 a.m. - 4:30 p.m. Join us for a day of storm water training in the rainiest city in the United States!
4/13/2018	REFRESHER (4-HOUR) TRAINING - MOBILE For current QCIs who received their initial training from Thompson Engineering. Call 251-666-2443 for more information.
4/17/2018	INITIAL (8-HOUR) TRAINING - BIRMINGHAM 8:30 a.m. - 4:30 p.m. April showers? Come inside for a fun day of training in the Birmingham area!
4/18/2018	REFRESHER (4-HOUR) TRAINING - BIRMINGHAM For current QCIs who received their initial training from Thompson Engineering. Call 251-666-2443 for more information.

QCI Storm Water Management Training Details – Birmingham Class

Date/Time

Wednesday, February 21, 2018
8:30 a.m. until 4:30 p.m.
Registration begins at 8:00 a.m.

Location

Alabama General Contractors Building
5000 Grantswood Road
Irondale, AL 35210
(205) 451-1400 or (800) 632-2025

Driving Directions

The AGC Building is located approximately one mile southwest of the intersection of I-459 and I-20. From I-459 East/North: Exit right at the Grant's Mill Exit (Exit 27). Turn left onto Grant's Mill Road; go 0.3 miles. Turn right onto Grantswood Road (Frontage Road); go 0.7 miles. The AGC Building is on the left facing the interstate. From I-459 West/South: Exit right at the Grant's Mill Exit (Exit 27). Turn right; go 0.1 miles. Turn right onto Grantswood Road (Frontage Road); go 0.7 miles. The AGC Building is on the left facing the interstate.

Course Description

The course will include a pre-test, Power Point slides, discussion, class exercises, product demonstrations, and a written final exam. You will receive a workbook based on the Power Point slides. We will ask each student to complete an evaluation form to let us know how well we are meeting our training objectives. We will also provide each paid participant with a certificate of completion and a wallet-size card containing his/her assigned QCI number and other information within two weeks after the class.

Meals

We will be serving a continental breakfast, a light lunch, morning and afternoon snacks, and beverages (coffee, juice, soft drinks, and bottled water). Please let us know in advance if you have any special dietary requirements.

Dress

Business casual or work clothes

Certification Policy

Registration fees are non-refundable. Payment is appreciated prior to or at the class. Substitutes are permitted. If you cannot attend and advise us in advance, your payment may be applied to attend another session within one year of the original class date. If you cancel without notice, you will be charged a \$150 no-show fee.

More Information

For more information, please call Cindy Roton at 251/665-5414 or Cora Neely at 251/665-5457. You can reach your instructors at 251/680-1686 (John) or at 334/444-7604 (Joel) on the day of the class.

***Thank you for selecting Thompson Engineering for your QCI training needs.
We look forward to seeing you at our class!***



thompson
ENGINEERING

Todd Sullivan
attended
July 25, 2017

Annette Menne

From: Todd Sullivan
Sent: Thursday, July 27, 2017 4:30 PM
To: Annette Menne
Subject: FW: Invitation - AL Stormwater Association Planning Group

From: Eve Brantley [mailto:brantef@auburn.edu]
Sent: Monday, July 24, 2017 8:50 AM
To: Daniel M. Ballard; bearrentinej@dot.state.al.us; Whitney Bell; Kory Boling; Eve Brantley - Auburn University; Ashley Campbell; Chad Christian; direcus.cooper@birminghamal.gov; Barry Fagan; Leslie Gahagan; John M Harris; Wade D Henry; Allison Jenkins; JWK@adem.alabama.gov; Marla S Smith; Thomas Mccauley; water@madisoncountyal.gov; Earl Norton; Eric Reutebuch; Jeff Rodgers; Sawyer, Rosemary; Todd Sullivan; jward@cityofgadscen.com; Josh Yates
Subject: Re: Invitation - AL Stormwater Association Planning Group

Dear All,

We look forward to seeing you tomorrow for a discussion on an Alabama Stormwater Association.

See meeting details in email below.

A summary of the meeting will be shared for those unable to attend.

Best,

Dan Ballard, City of Auburn
Eve Brantley, Auburn Univ / Extension
Barry Fagan, Volkert, Inc.
Wade Henry, AL Dept of Transportation

On Jun 22, 2017, at 12:47 PM, Eve Brantley <brantef@auburn.edu> wrote:

Dear All,

Recent discussions indicate a need to form an Alabama Stormwater Association to connect and share stormwater resources, provide access to relevant research and case studies, and offer stormwater related training.

You've been identified as a leader in stormwater management in Alabama and recommended to serve on an initial planning group for an Alabama Stormwater Association. We hope that you will accept this invitation and attend a planning meeting in Montgomery to discuss development of this association.

When: July 25, 2017; 10 am - 2 pm (or a little later if needed)

Where: AL Department of Transportation, Conference Rooms 7 & 8, 1409 Coliseum Blvd, Montgomery

Meeting topics:

- * Vision and goal of an Alabama Stormwater Association
- * Potential services offered by association
- * Institutional home
- * Next steps

Thank you,

Dan Ballard, City of Auburn
Eve Brantley, Auburn Univ / Extension
Barry Fagan, Volkert, Inc.
Wade Henry, AL Dept of Transportation

Todd Sullivan
attended
October 5, 2017

Annette Menne

Subject: FW: Alabama Stormwater meeting, Oct. 5: Location, Parking, Building Access, Lunch
Attachments: Map of Montgomery with ALDOT.JPG; ALDOT Central Office Close-Up.jpg

From: Todd Sullivan
Sent: Tuesday, October 10, 2017 8:42 AM
To: Annette Menne <AMenne@florenceal.org>
Subject: FW: Alabama Stormwater meeting, Oct. 5: Location, Parking, Building Access, Lunch

You are receiving this message because you are registered for the Alabama Stormwater Association meeting that will be held at the ALDOT Central Office on **Thursday** (Oct. 5) from 10:00 AM to 2:00 PM. We look forward to seeing you at the meeting! Here is some additional information to help you prepare for attending:

Location. The ALDOT Central Office is located at 1409 Coliseum Blvd, Montgomery, AL 36110. In case you need it, a map of Montgomery with the location of the ALDOT Central Office highlighted is attached.

Parking. Please park in the north parking lot, which is closest to the meeting location. The north parking lot is highlighted in the close-up image of the ALDOT Central Office attached. If the north parking lot is full when you arrive, you may park in any available, unreserved space on the ALDOT campus.

Building Access. Please enter the ALDOT Central Office through the northernmost entrance on the back side of the building. This entrance is highlighted in the close-up image of the ALDOT Central Office attached. At that entrance, ALDOT Security will grant you building access after you provide valid identification, and then you will be able to sign-in for the meeting at the registration table.

Lunch. At approximately 11:30 AM, the meeting will break for lunch for about one (1) hour. Please either bring a lunch or arrange to get lunch off-campus. Several restaurants, including Subway, Hardee's, and Burger King, are located very near the ALDOT Central Office.

If you have any questions about the meeting, please let me know. We wish you safe travel on Thursday!

Scott



Scott W. Rogers, PhD, PE, CPMSM
Environmental Program Engineer
Design Bureau
Alabama Department of Transportation
1409 Coliseum Blvd.
Montgomery, AL 36110
Office: (334) 353-6214
E-mail: rogerssc@dot.state.al.us

From: Rogers, Scott
Sent: Tuesday, September 12, 2017 15:09

Just a reminder to register (at <https://form.jotform.us/72364762984166>) for the meeting by **this Thursday, Sept. 14**, if you haven't done so already. Please see the original invitation below for the details. We already have over 40 people confirmed to attend, so seats are going fast! We look forward to seeing you on Oct. 5!

Scott



Scott W. Rogers, PhD, PE, CPMSM
MS4 Permit Engineer
Design Bureau, Stormwater Section
Alabama Department of Transportation
1409 Coliseum Blvd.
Montgomery, AL 36110
Office: (334) 353-6214
E-mail: rogerssc@dot.state.al.us

Alabama Stormwater Association "Pilot" Meeting

Topic: MS4 Audit Expectations & Preparation
Date: Thursday, October 5, 2017
Time: 10:00 AM – 2:00 PM

Location: ALDOT Central Office
1409 Coliseum Blvd
Montgomery, AL 36110

RSVP: Complete the registration form (<https://form.jotform.us/72364762984166>) by **Thursday, September 14, 2017**, to reserve a seat.

** Please reserve seats for no more than **three (3)** representatives from your MS4.*

** If you wish to register multiple representatives, complete one registration form for each representative.*

** A consultant representing your MS4 is welcome to attend, but we respectfully ask consultants to refrain from any marketing during the meeting.*

Why we're holding this meeting now

- Many MS4s in the state have experienced audits recently, and many other MS4s will be audited in the not-too-distant future.
- ADEM has issued new permits to many previously-regulated MS4s. New permit requirements mean new challenges to these already-established MS4 programs.
- ADEM has issued permits to many MS4s that weren't regulated previously. These MS4s may need some orientation to start off on the right foot.

Meeting Itinerary

- **Introductions & Ice-Breaker.** An opportunity for attending MS4 representatives to introduce themselves and share the most pressing needs or concerns for their respective MS4 programs.
- **Panel Discussion: MS4 Audit Experiences.** Hear insights from MS4s that have gone through an MS4 audit recently. Each panelist represents a different type of MS4 (i.e., Phase I, Phase II, non-traditional). Attendees in the audience will be encouraged to share their own MS4 audit experiences as well.

Panelists: Rosemary Sawyer, PE – City of Mobile (Phase I)
Jeramy Ward, CPMSM, CPESC, CSI – City of Gadsden (Phase II)
Tom McCauley, CHMM – Auburn University (non-traditional)

- **Discussion with Q&A Session: ADEM's Tips for a Successful Audit.** ADEM's Marla Smith, CPMSM, will likely be conducting the audit of your MS4 program. Learn what she's looking for when she evaluates your program and the common problems she's observed in other programs.
- **Open Forum: Role(s) of the Alabama Stormwater Association in Addressing MS4 Needs & Concerns.** Help shape an organization that can provide support for your MS4 as it faces various challenges and prepares for the eventual audit.

We look forward to your joining us as we begin working toward our common MS4 goals together!

Organizers: Daniel Ballard, ASLA, PLA – City of Auburn

Eve Brantley, PhD – Auburn University / Alabama Cooperative Extension System
Barry Fagan, PE/PLS, ENV SP, CPMSM, CPESC, CESSWI – Volkert, Inc.
Wade Henry, PE, CPMSM, CPESC – Alabama Department of Transportation
Allison Jenkins – Alabama Soil & Water Conservation Committee
Scott Rogers, PhD, PE, CPMSM – Alabama Department of Transportation

Contact: Scott Rogers – rogerssc@dot.state.al.us, (334) 353-6214

Annette Menne

From: Jennifer Threet
Sent: Monday, April 30, 2018 12:44 PM
To: Bill Batson
Cc: Annette Menne
Subject: April 2018 Report.pdf with pictures - Stormwater Report
Attachments: April 2018 (1).jpg; April 2018 (2).jpg; April 2018 (3).jpg; April 2018 (4).jpg; April 2018 (5).jpg; April 2018 (6).jpg; April 2018 (7).jpg; April 2018 (8).jpg; April 2018 (9).jpg; April 2018 Report.pdf

Street Dept. Monthly Report for April 2018

See attachment(s).

Thanks,
Jennifer Threet

Your message is ready to be sent with the following file or link attachments:

April 2018 (1).jpg
April 2018 (2).jpg
April 2018 (3).jpg
April 2018 (4).jpg
April 2018 (5).jpg
April 2018 (6).jpg
April 2018 (7).jpg
April 2018 (8).jpg
April 2018 (9).jpg
April 2018 Report.pdf

Note: To protect against computer viruses, e-mail programs may prevent sending or receiving certain types of file attachments. Check your e-mail security settings to determine how attachments are handled.

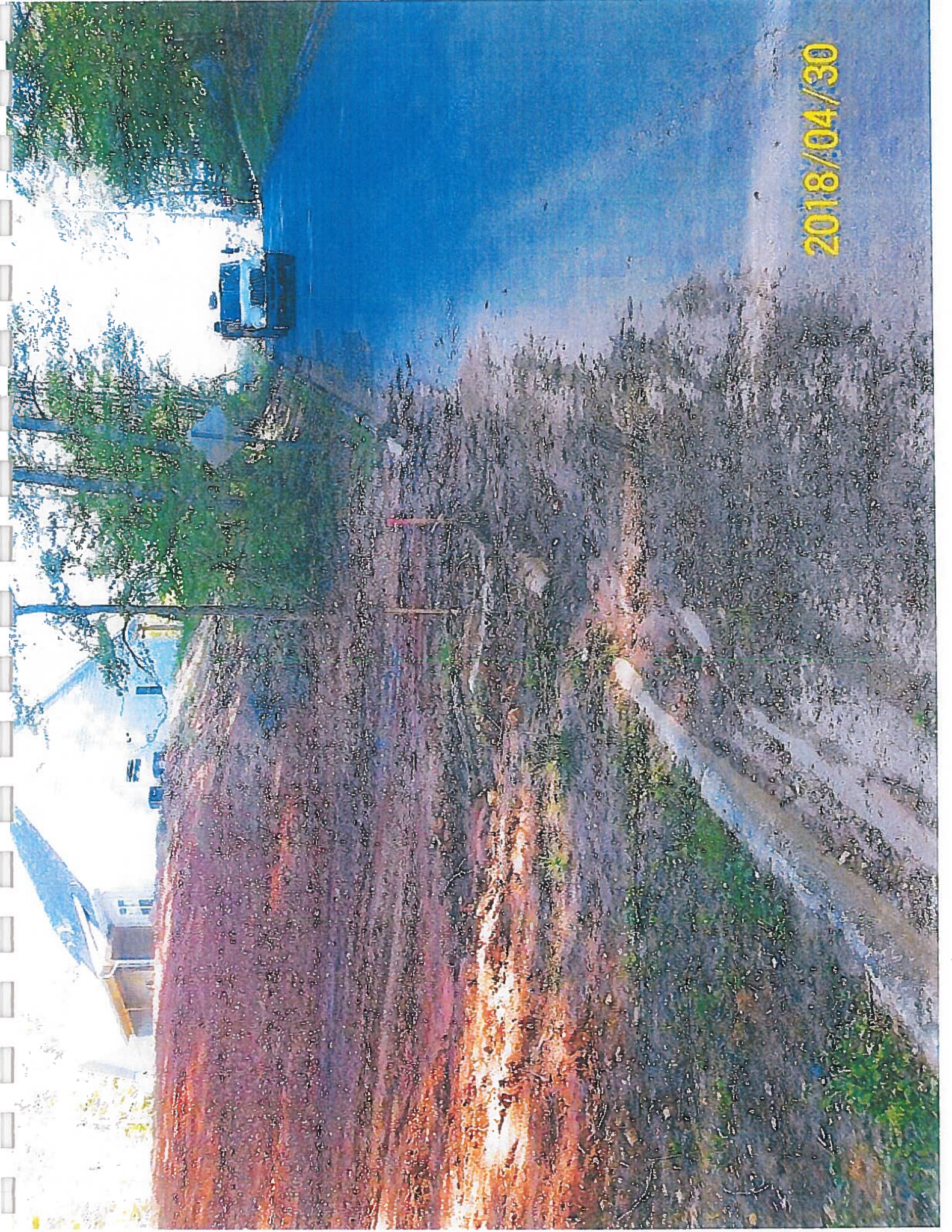
2018/04/25



2018/04/25



2018/04/30



2018/04/30



2018/04/30



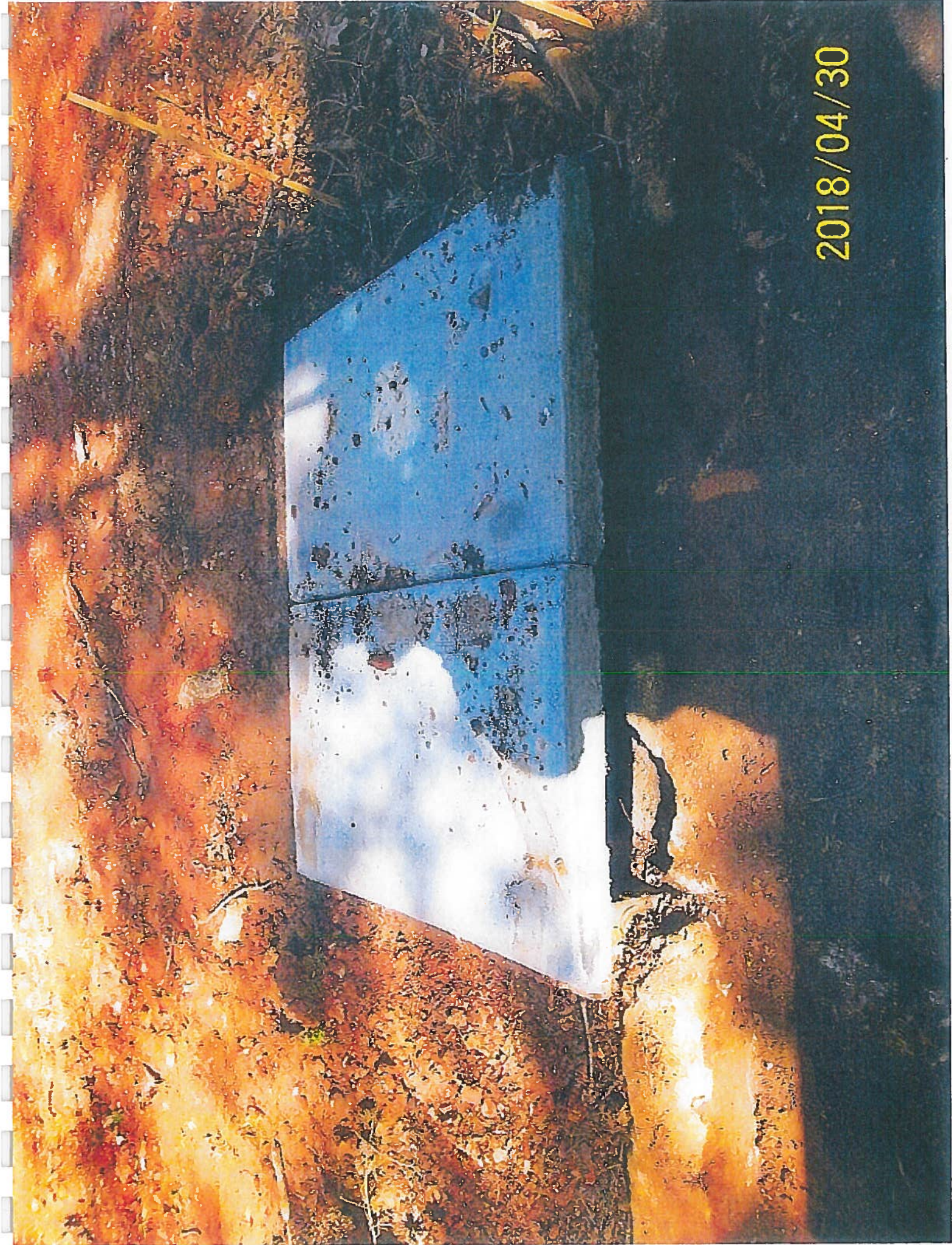
2018/04/30



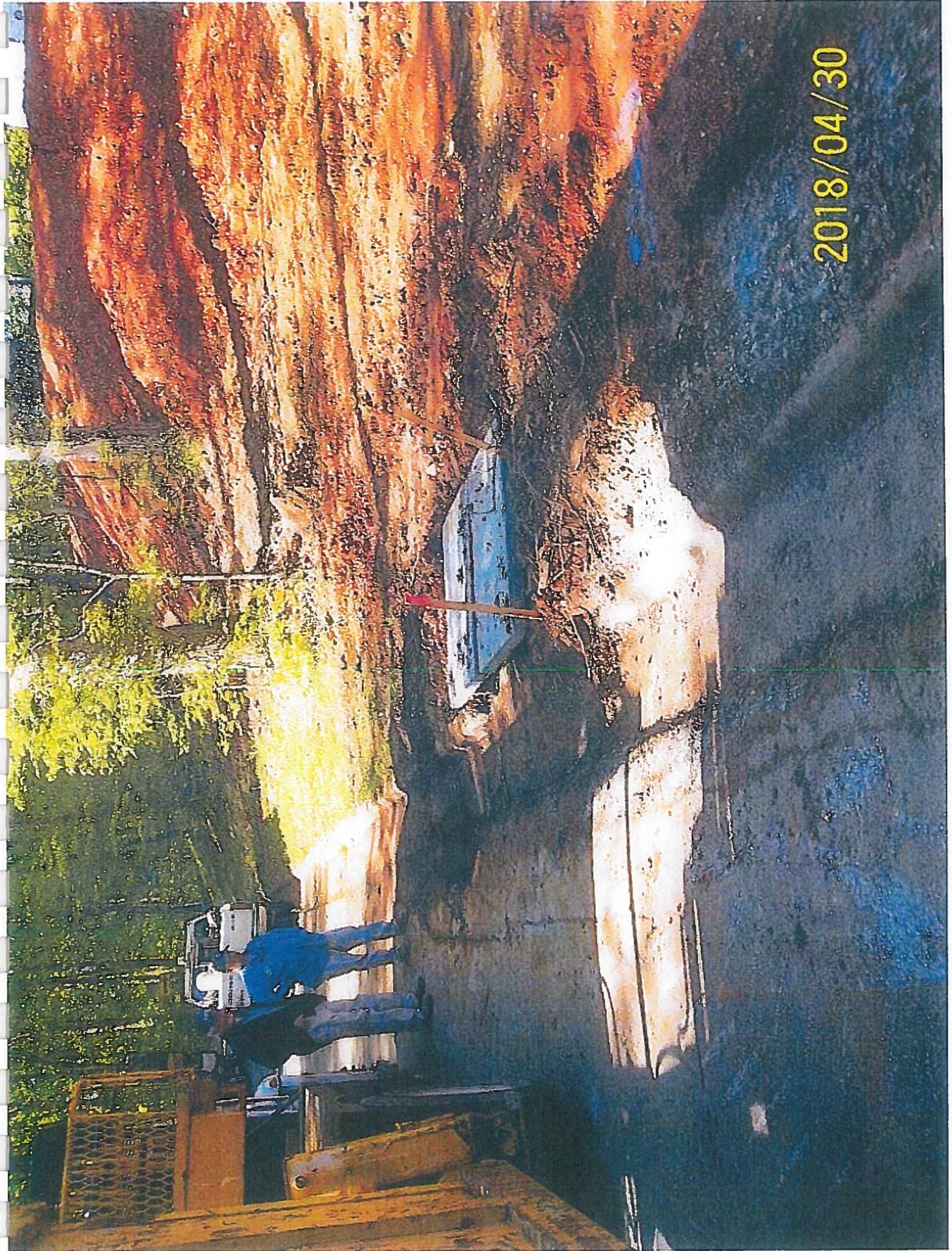
2018/04/30

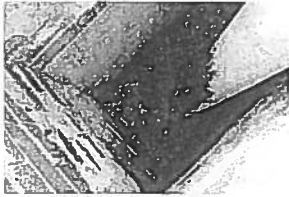


2018/04/30



2018/04/30

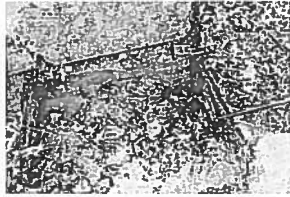




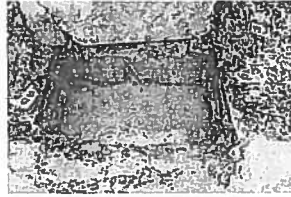
Feb 2018 (7).JPG



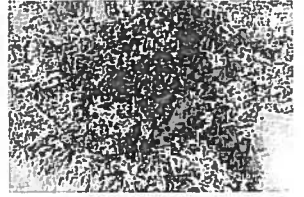
Feb 2018 (8).JPG



Feb 2018 (9).JPG



Feb 2018 (10).JPG



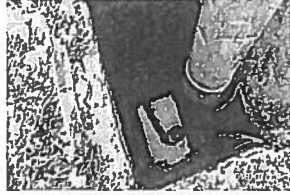
Feb 2018 (1).JPG



Feb 2018 (2).JPG



Feb 2018 (3).JPG



Feb 2018 (4).JPG



Feb 2018 (5).JPG



Feb 2018 (6).JPG

Annette Menne

From: Jennifer Threet
Sent: Thursday, February 01, 2018 8:04 AM
To: Bill Batson; Annette Menne
Subject: Jan 2018 - Street Dept. Stormwater Report
Attachments: Jan 2018 (1).JPG; Jan 2018 (2).JPG; Jan 2018 (3).JPG; Jan 2018 (4).JPG; Jan 2018 Storm Drain Rpt.pdf

See attached report and picture for January 2018.

Thanks,
Jennifer Threet

*City of Florence, AL
Solid Waste, Street and Recycling
Office Coordinator
256-760-6496
jthreet@florenceal.org
florenceal.org*



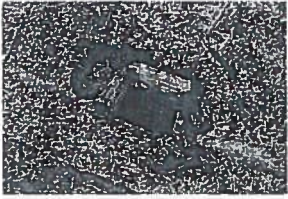


2018/01/31

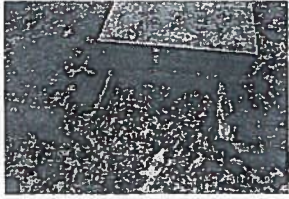




2018/01/31



Dec 2017 (19).JPG



Dec 2017 (1).JPG



Dec 2017 (2).JPG



Dec 2017 (3).JPG



Dec 2017 (4).JPG



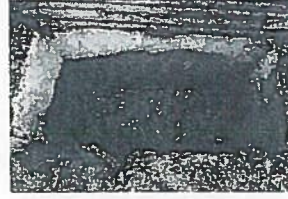
Dec 2017 (5).JPG



Dec 2017 (6).JPG



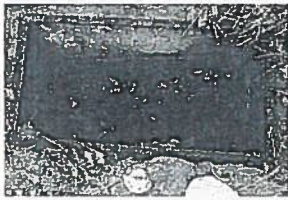
Dec 2017 (7).JPG



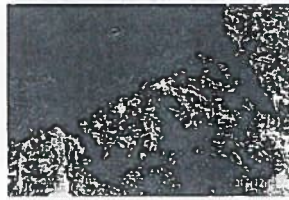
Dec 2017 (8).JPG



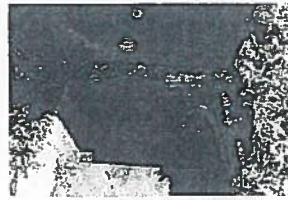
Dec 2017 (9).JPG



Dec 2017 (10).JPG



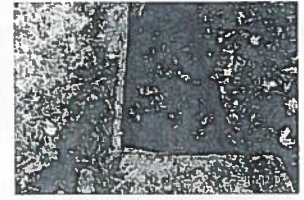
Dec 2017 (11).JPG



Dec 2017 (12).JPG



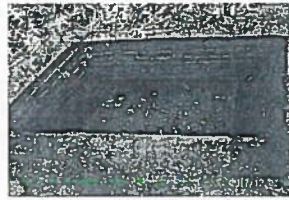
Dec 2017 (13).JPG



Dec 2017 (14).JPG



Dec 2017 (15).JPG



Dec 2017 (16).JPG



Dec 2017 (17).JPG



Dec 2017 (18).JPG

Annette Menne

From: Jennifer Threet
Sent: Monday, December 04, 2017 7:50 AM
To: Bill Batson
Cc: Annette Menne
Subject: Stormwater Report November 2017 - STREET DEPT.
Attachments: Nov 2017 (1).jpg; Nov 2017 (2).jpg; Nov 2017 (3).jpg; Nov 2017 (4).jpg; Nov 2017 report.pdf

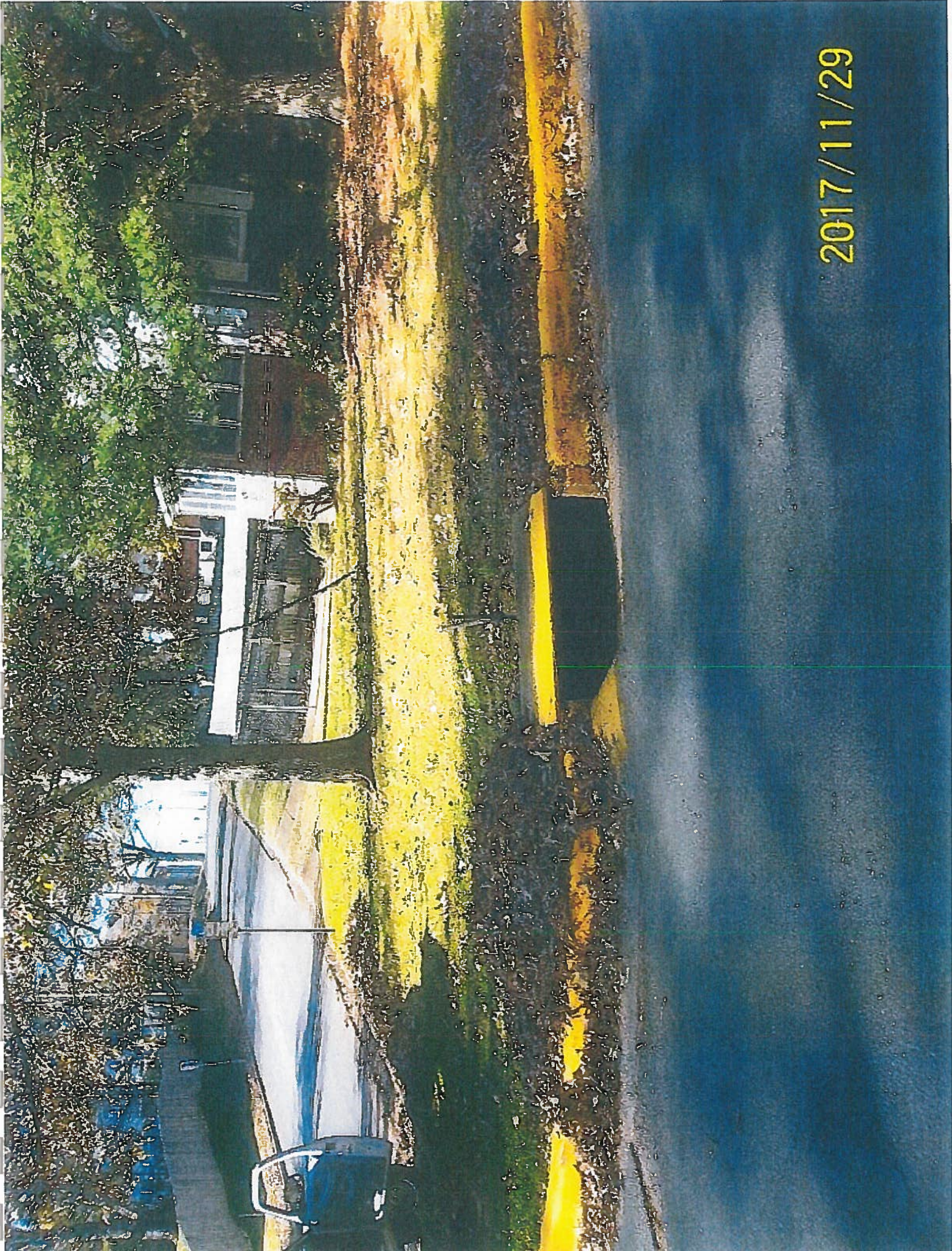
See attachment(s).

Thanks,
Jennifer Threet

Your message is ready to be sent with the following file or link attachments:

Nov 2017 (1).jpg
Nov 2017 (2).jpg
Nov 2017 (3).jpg
Nov 2017 (4).jpg
Nov 2017 report.pdf

Note: To protect against computer viruses, e-mail programs may prevent sending or receiving certain types of file attachments. Check your e-mail security settings to determine how attachments are handled.



2017/11/29

2017/11/29





2017/11/06



Oct 2017 (4).JPG



Oct 2017 (5).JPG



Oct 2017 (6).JPG



Oct 2017 (7).JPG



Oct 2017 (8).JPG



Oct 2017 (1).JPG



Oct 2017 (2).JPG



Oct 2017 (3).JPG



2017/09/06



2017/09/08



Aug 2017 (8).JPG



Aug 2017 (9).JPG



Aug 2017 (10).JPG



Aug 2017 (1).JPG



Aug 2017 (2).JPG



Aug 2017 (3).JPG



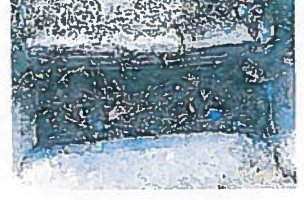
Aug 2017 (4).JPG



Aug 2017 (5).JPG



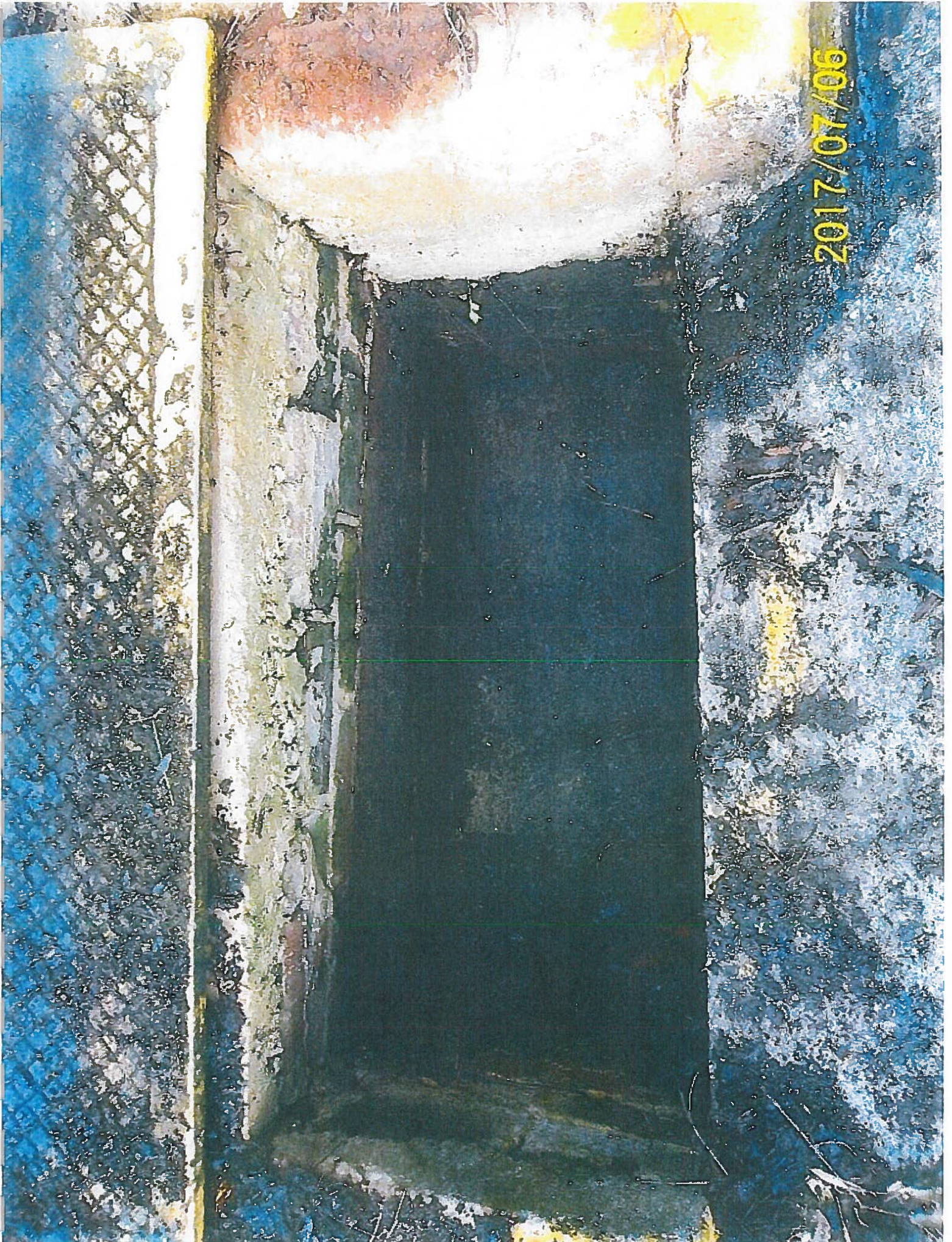
Aug 2017 (6).JPG



Aug 2017 (7).JPG



2017/07/06





May 2017 (1).JPG



May 2017 (2).JPG



May 2017 (3).JPG



May 2017 (4).JPG



May 2017 (5).JPG



May 2017 (6).JPG



May 2017 (7).JPG



May 2017 (8).JPG



May 2017 (9).JPG



May 2017 (10).JPG



May 2017 (11).JPG



May 2017 (12).JPG



April 2017 (1).JPG



April 2017 (2).JPG



April 2017 (3).JPG



April 2017 (4).JPG



April 2017 (5).JPG



April 2017 (6).JPG



April 2017 (7).JPG



April 2017 (8).JPG



April 2017 (9).JPG



April 2017 (10).JPG



April 2017 (11).JPG



April 2017 (12).JPG



March 2017 (9).JPG



March 2017 (10).JPG



March 2017 (1).JPG



March 2017 (2).JPG



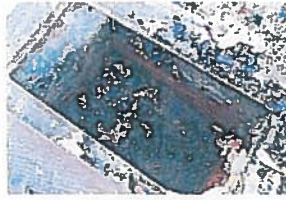
March 2017 (3).JPG



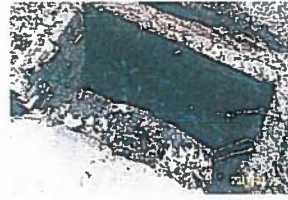
March 2017 (4).JPG



March 2017 (5).JPG



March 2017 (6).JPG



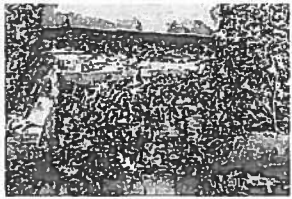
March 2017 (7).JPG



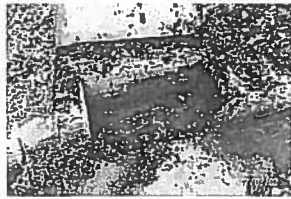
March 2017 (8).JPG



Feb 2017-6.JPG



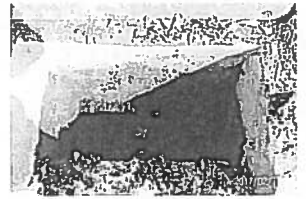
Feb 2017-1.JPG



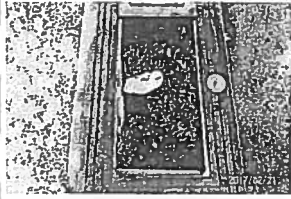
Feb 2017-2.JPG



Feb 2017-3.JPG



Feb 2017-4.JPG



Feb 2017-5.JPG

Storm Drain Clean-Out

Location	Start Date	Start Time	Start Picture #	Debris Weight	End Date	End Time	End Picture #
WOODARD and HUNTSVILLE	1-4-17	10:45	1	25 lbs	1-4-17	10:50	2
WOODARD and HUNTSVILLE RD	1-4-17	10:55	3	25 BOXES & PIPES BRACKETS	1-4-17	11:10	4
2100 BACK ARMINATION	1-4-17	11:19	5	35 lbs	1-4-17	11:25	6
HERMITAGE and HERMITAGE	1-4-17	12:19	7, 8	250 lbs	1-4-17	12:35	9, 10
417 N COURT	1-4-17	12:40	11	250 lbs	1-4-17	1:09	12
STEWART and LUCIA	1-4-17	1:15	13	350 lbs	1-4-17	1:25	14
POTTER and HERMITAGE	1-5-17	9:45	15, 16	250 lbs	1-5-17	10:05	17, 18
MATHEW and WILLY HAM	1-5-17	10:05	19	200 lbs	1-5-17	10:20	20
OLIVE & LUCIA	1-5-17	10:23	21	150 lbs	1-5-17	10:30	22
1021 STEWART	1-5-17	10:33	23	400 lbs	1-5-17	10:50	24
SHERRILL and RUBY	1-5-17	12:53	25	100 lbs	1-5-17	12:58	26
FORBUE and BARNES	1-13-17	10:55	27	75 lbs	1-13-17	11:05	28
SHERRILL & CALLOW	1-18-17	7:35	29	150 lbs	1-18-17	8:53	30
HUNTSVILLE RD	1-18-17	9:38	31	250 lbs	1-18-17	9:45	32
HUNTSVILLE RD	1-18-17	9:46	33	600 lbs	1-18-17	10:40	34
HUNTSVILLE RD and PICKENS	1-18-17	10:40	35	1800 lbs	1-18-17	10:30	36, 37, 38

1-18-17 JET RODDER DOWN BACKLASH
 START HUNTSVILLE RD & PICKENS BOX
 TOOK TO SHOP TO BE WORK ON

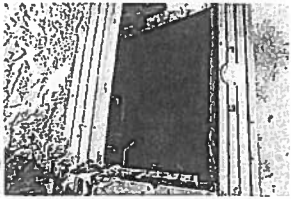
1-24-17 STARTED BACKLASH BOXES
 AT PICKENS & HUNTSVILLE RD
 # 3 BOXES AND WTS # OUT PIPES

7:30 AM - 10:30 AM

2

med
 pe

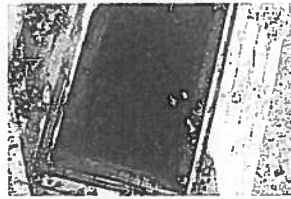
3



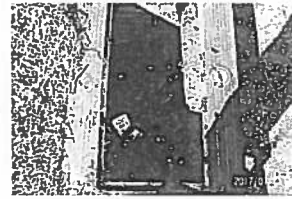
Jan 2017 (36).JPG



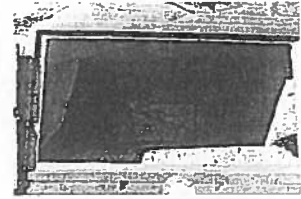
Jan 2017 (37).JPG



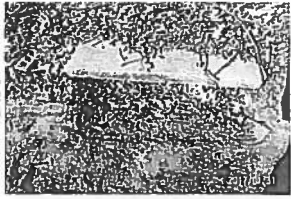
Jan 2017 (38).JPG



Jan 2017 (39).JPG



Jan 2017 (40).JPG



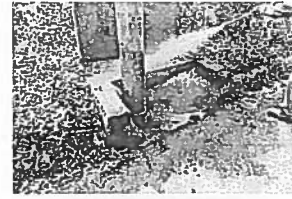
Jan 2017 (41).JPG



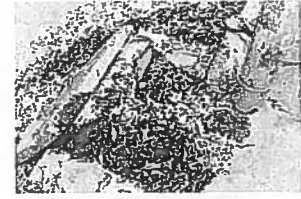
Jan 2017 (42).JPG



Jan 2017 (1).JPG



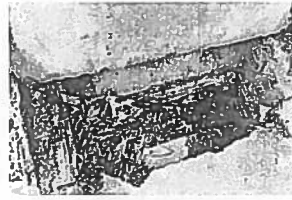
Jan 2017 (2).JPG



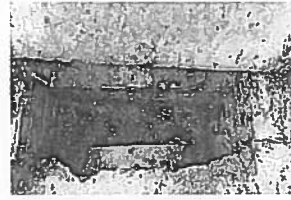
Jan 2017 (3).JPG



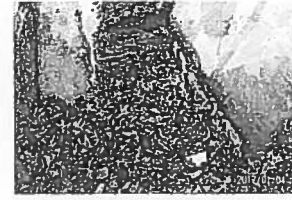
Jan 2017 (4).JPG



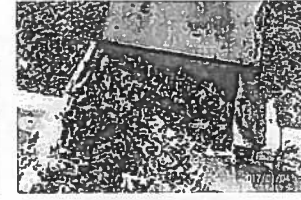
Jan 2017 (5).JPG



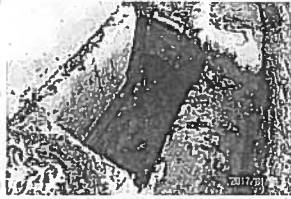
Jan 2017 (6).JPG



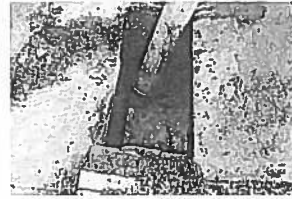
Jan 2017 (7).JPG



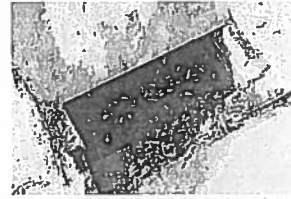
Jan 2017 (8).JPG



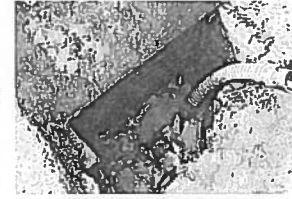
Jan 2017 (9).JPG



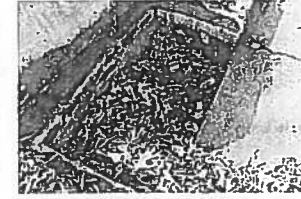
Jan 2017 (10).JPG



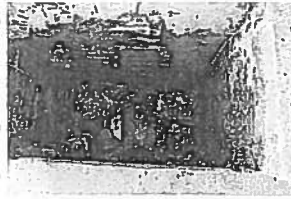
Jan 2017 (11).JPG



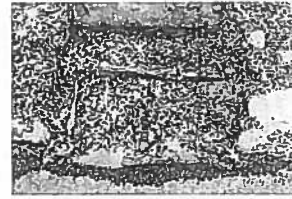
Jan 2017 (12).JPG



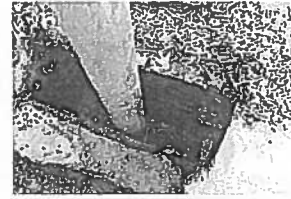
Jan 2017 (13).JPG



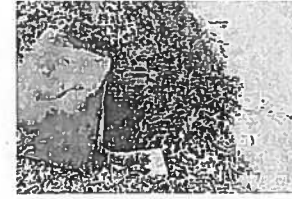
Jan 2017 (14).JPG



Jan 2017 (15).JPG



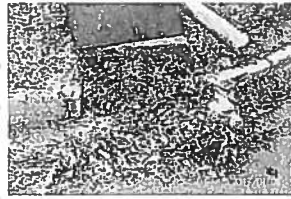
Jan 2017 (16).JPG



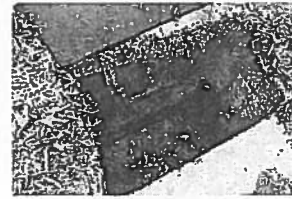
Jan 2017 (17).JPG



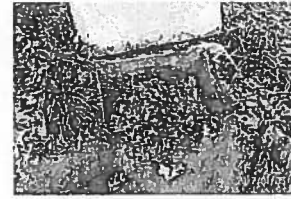
Jan 2017 (18).JPG



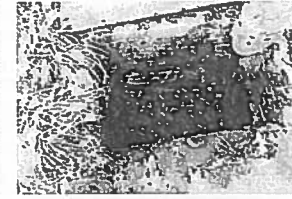
Jan 2017 (19).JPG



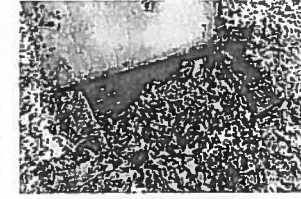
Jan 2017 (20).JPG



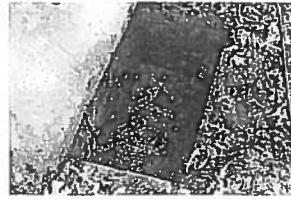
Jan 2017 (21).JPG



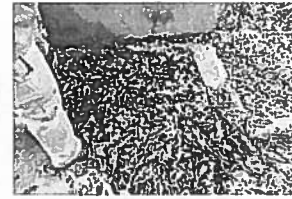
Jan 2017 (22).JPG



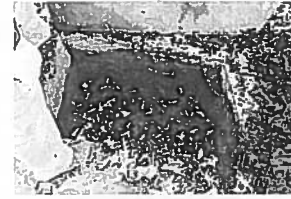
Jan 2017 (23).JPG



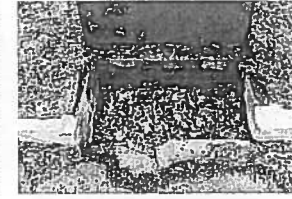
Jan 2017 (24).JPG



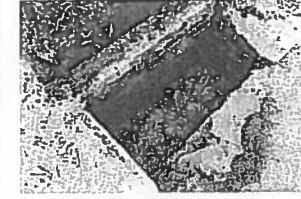
Jan 2017 (25).JPG



Jan 2017 (26).JPG



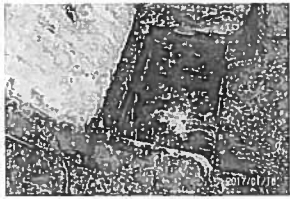
Jan 2017 (27).JPG



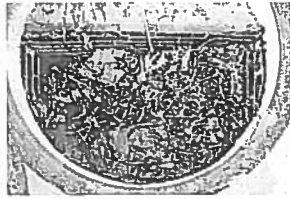
Jan 2017 (28).JPG



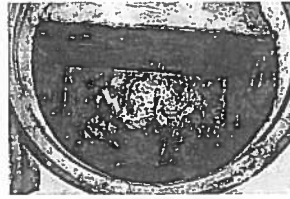
Jan 2017 (29).JPG



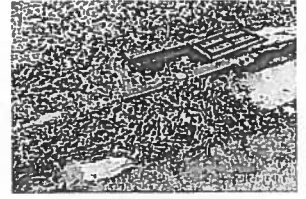
Jan 2017 (30).JPG



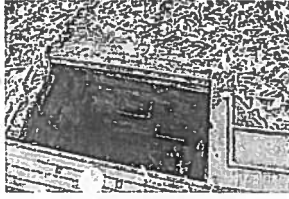
Jan 2017 (31).JPG



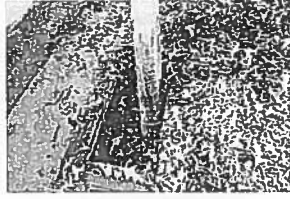
Jan 2017 (32).JPG



Jan 2017 (33).JPG



Jan 2017 (34).JPG



Jan 2017 (35).JPG



Nov 2016 (1).JPG



Nov 2016 (2).JPG



Nov 2016 (3).JPG



Nov 2016 (4).JPG



Nov 2016 (5).JPG



Nov 2016 (6).JPG



Nov 2016 (7).JPG



Nov 2016 (8).JPG