



MILNER-HACKWORTH GALLERY

MEFFO

1. Structure #1, <sup>(CR)</sup> Milner-Hackworth Gallery, Downtown Florence  
Historic District
2. Lauderdale County, Alabama
3. Gene A. Ford
4. August 24, 1994
5. Division of Archaeology, 13075 Moundville Archaeological  
Park, Moundville, AL 35474
6. West looking East
7. 1



WE HADY  
MUSIC  
FESTIVAL  
AUGUST 7-11

COURT ST

FORD'S JEWELRY

PEDESTRIAN WALK

2

K WORTH GALLERY

1. Structure #2 (CK), Mefford's Jewelers, Downtown Florence  
Historic District
2. Lauderdale County, Alabama
3. Gene A. Ford
4. August 26, 1994
5. Division of Archaeology, 13025 Moundville Archaeological  
Park, Moundville, Alabama 35474
6. West looking East
7. 2



1. Structures #1(CR) and #2(CR), Milner's Drug Store, Mefford's Jewelers, Downtown Florence Historic District
2. Lauderdale County, Alabama
3. Gene A. Ford
4. August 26, 1994
5. Division of Archaeology, 13075 Moundville Archaeological Park  
Moundville, Alabama 35474
6. Southwest looking northeast
7. 3



MEFFORD'S

AUGUST 7-13

First Federal Savings & Loan

FOR THE CITY OF...  
FOR THE CITY OF...  
FOR THE CITY OF...

1. Structure # 2<sup>(CR)</sup>, Metford's Jewelers, Downtown Florence  
Historic District
2. Lauderdale County, Alabama
3. Gene A. Ford
4. August 26, 1994
5. Division of Archaeology, 13075 Moundville Archaeological  
Park, Moundville, Alabama 35474
6. South looking North
- 7.4





**Blair**  
FURNITURE  
SPACED

*Blair* FURNITURE SPACED



1. Structures # 3(NCR) and #4(CR), Hy Tek and Blazer Financial services, Downtown Florence Historic District
2. Lauderdale County, Alabama
3. Gene A. Ford
4. August 26, 1994
5. Division of Archaeology, 13075 Moundville Archaeological Park, Moundville, Alabama 35474
6. South looking North
7. 5

AN'S  
AID SERVICE  
concern

JEWELRY  
L. H. ...

TREND SETTERS INC.

24

1. Structure # 7(CCR), Trend Setters Inc., Downtown Florence  
Historic District

2. Lauderdale County, Alabama

3. Gene A. Ford

4. August 26, 1994

5. Division of Archaeology, 13075 Moundville Archaeological  
Park, Moundville, Alabama 35474

6. West looking ~~East~~

7. 6

L SERVICES

**BECKMAN'S**  
CUSTOM HEARING AID SERVICE  
Hearing Is Our Concern

107



1. Structure # 8 (CR), Beckmanis Hearing Service, Downtown Florence  
Historic District
2. Lauderdale County
3. Gene A. Ford
4. August 26, 1994
5. Division of Archaeology, 13075 Moundville Archaeological  
Park, Moundville, Alabama 35474
6. West looking East
7. 7

**X**TRA LEGAL SERVICES

**BAIL BONDING**  
CASH AND  
FEE FREE  
24 HOURS A DAY

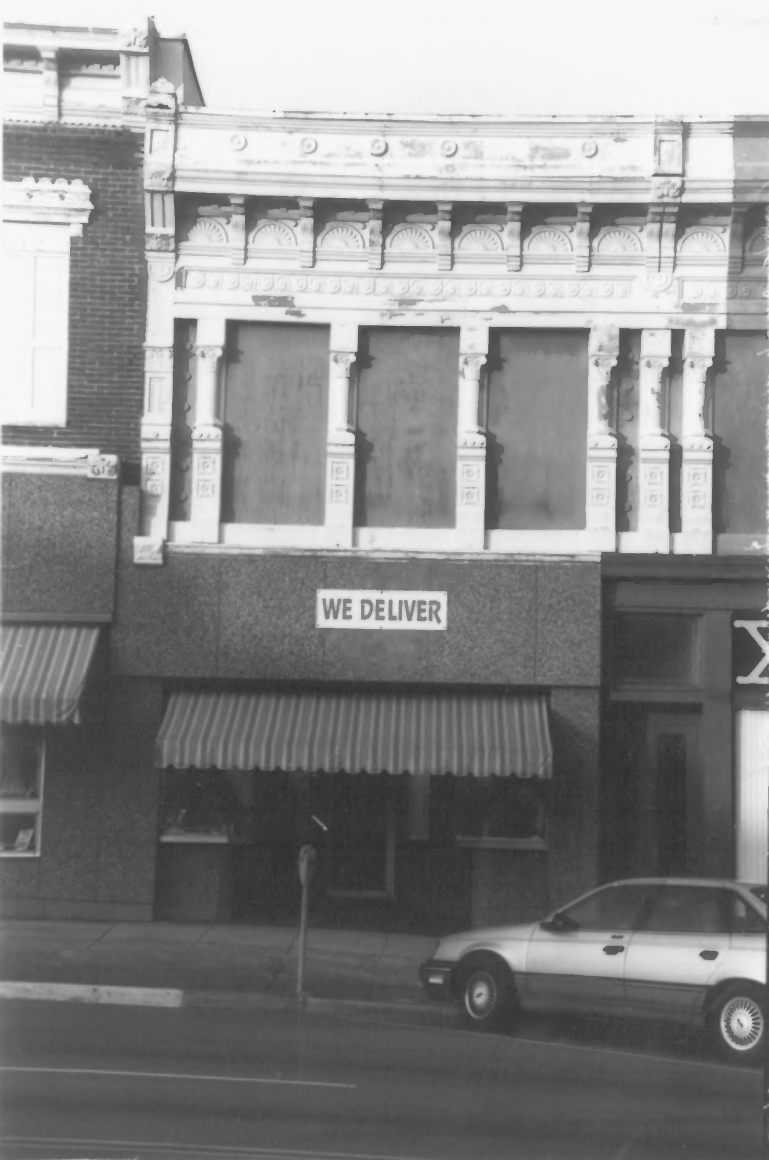
**PRIVATE  
INVESTIGATIONS**  
PROSECUTOR  
SUPPORT SERVICES  
760.230.0000

**BECCO**  
CUSTOM HEARING  
Hearing



1. Structure #9 (CR), XTRH Legal Services, Downtown Florence  
Historic District
2. Lauderdale County, Alabama
3. Gene A. Ford
4. August 26, 1994
5. Division of Archaeology, 13075 Moundville Archaeological  
Park, Moundville, Alabama 35474
6. West looking East
7. 8





WE DELIVER

X

1. Structure # 10 (CR), part of It's my Party, Downtown Florence  
Historic District
2. Lauderdale County, Alabama
3. Gene A. Ford
4. August 26, 1994
5. Division of Archaeology, 13075 Moundville Archaeological  
Park, Moundville, Alabama 35474
6. West looking East
7. 9



1. Structures # 11 (CCR) through # 5 (CCR), Magnolia Church of Christ, # 6 (CCR) with vitrolite siding on facade, Musche Shoals Abstract & Title Co., # 5 (CCR) just east of # 6 (CCR), Downtown Florence Historic District
2. Lauderdale County, Alabama
3. Gene A. Ford
4. August 26, 1994
5. Division of Archaeology, 13075 Moundville Archaeological Park, Moundville, Alabama 35474
6. Northwest looking southeast
7. 10



IT'S MY PARTY!

THE GREAT  
MUSIC  
FESTIVAL

1962

1. Structure # 11 (CR), I'ts my Party, Downtown Florence  
Historic District
2. Lauderdale County, Alabama
3. Gene A. Ford
4. August 26, 1994
5. Division of Archaeology, 13075 Moundville Archaeological  
Park, Moundville, Alabama 35474
6. North looking South
7. 11



WE DELIVER

XTRA LEG-ALTERNES

1. Details of Structures #10 (CCR) through # 6 (CCR)  
Downtown Florence Historic District
2. Lauderdale County, Alabama
3. Gene A. Ford
4. August 26, 1994
5. Division of Archaeology, 13075 Moundville Archaeological  
Park, Moundville, Alabama 35474
6. Northwest looking Southeast
7. 12





IT'S MY PARTY!

1. Details of Structure # 11CCR), It's my Party (E. Tennessee Street side), Downtown Florence Historic District
2. Lauderdale County, Alabama
3. Gene A. Ford
4. August 26, 1994
5. Division of Archaeology, 13075 Moundville Archaeological Park  
Moundville, Alabama 35474
6. Northeast looking Southwest
7. 13



IT'S MY PARTY!

BELL'S  
ALL  
SERIES

WE DELIVER

X  
TRA

1. Structures # 12(NCR), #11CCR), and #10CCR)
2. Lauderdale County, Alabama
3. Gene A. Ford
4. August 26, 1994
5. Division of Archaeology, 13005 Moundville Archaeological Park, Moundville, Alabama 35474
6. Northwest looking Southeast
7. 14



1. structures #. 13 (NCR), #12 (CCR), and #11 (CCR), Downtown  
Florence Historic District

2. Lauderdale County, Alabama

3. Gene A. Ford

4. August 26, 1994

5. Division of Archaeology, 13075 Moundville Archaeological  
Park, Moundville, Alabama 35474.

6. Northeast looking southwest

7. 15



1. Structures #13 (NER), A Touch of Class, and #12 (NCCR), H+R Block, Downtown Florence Historic District
2. Lauderdale County, Alabama
3. Gene A Ford.
4. August 26, 1994
5. Division of Archaeology, 13075 Moundville Archaeological Park, Moundville, Alabama 35474
6. Northeast looking southwest
7. 16





1. Structure #14(CR), Surprise Store, Downtown Florence  
Historic District
2. Lauderdale County, Alabama
3. Gene A. Ford
4. August 26, 1994
5. Division of Archaeology, 13075 Moundville Archaeological  
Park, Moundville, Alabama 35974
6. North looking South
7. 17

*Furniture*

**SHOES** **SHOES**

**BARBERSHOP**  
BILLIARDS & GRILL



1. Structure # 15(CR), Smoke house Billard's and Grill/Bill's Shoes  
Downtown Florence Historic District
2. Lauderdale County, Alabama
3. Gene A Ford
4. August 26, 1994
5. Division of Archaeology, 13075 Moundville Archaeological  
Park, Moundville, Alabama 35474
6. Northwest looking Southeast
7. 18



POSEY

POSEY FURNITURE

**POSEY** *Furniture*

St. 7  
audiology  
hearing aid  
division



1. Structure # 16 (CR), Posey's Furniture, Downtown Florence  
Historic District
2. Lauderdale County, Alabama
3. Gene A. Ford
4. August 26, 1994
5. Division of Archaeology, 13075 Moundville Archaeological  
Park, Moundville, Alabama 35474
6. North looking south
7. 19



SCHAEFER'S

SCHAEFER'S

SCHAEFER'S

SCHAEFER'S

SCHAEFER'S

SCHAEFER'S

Studio  
12 1/2  
fine art  
framing gallery  
division

Studio  
12 1/2  
audiology  
hearing aid  
division

POSEY

1. Structure # 17(CCR), Studio 124/Hearing Aid Service,  
Downtown Florence Historic District
2. Lauderdale County, Alabama
3. Gene A. Ford
4. August 26, 1994
5. Division of Archaeology, 13075 Moundville Archaeological  
Park, Moundville, Alabama 35474
6. North looking South
7. 20





KILSCEN'S  
KORNGEL

OPENING LATE HOURS  
IN EARLY AFTERNOON

Why Let Your Caravan Sleep?  
No. 100, With a Sleeping Unit?

Sho Cars!

Woods 22, Building & Heating Co.  
211, 212, 213, 214, 215, 216, 217, 218, 219, 220, 221, 222, 223, 224, 225, 226, 227, 228, 229, 230, 231, 232, 233, 234, 235, 236, 237, 238, 239, 240, 241, 242, 243, 244, 245, 246, 247, 248, 249, 250, 251, 252, 253, 254, 255, 256, 257, 258, 259, 260, 261, 262, 263, 264, 265, 266, 267, 268, 269, 270, 271, 272, 273, 274, 275, 276, 277, 278, 279, 280, 281, 282, 283, 284, 285, 286, 287, 288, 289, 290, 291, 292, 293, 294, 295, 296, 297, 298, 299, 300, 301, 302, 303, 304, 305, 306, 307, 308, 309, 310, 311, 312, 313, 314, 315, 316, 317, 318, 319, 320, 321, 322, 323, 324, 325, 326, 327, 328, 329, 330, 331, 332, 333, 334, 335, 336, 337, 338, 339, 340, 341, 342, 343, 344, 345, 346, 347, 348, 349, 350, 351, 352, 353, 354, 355, 356, 357, 358, 359, 360, 361, 362, 363, 364, 365, 366, 367, 368, 369, 370, 371, 372, 373, 374, 375, 376, 377, 378, 379, 380, 381, 382, 383, 384, 385, 386, 387, 388, 389, 390, 391, 392, 393, 394, 395, 396, 397, 398, 399, 400, 401, 402, 403, 404, 405, 406, 407, 408, 409, 410, 411, 412, 413, 414, 415, 416, 417, 418, 419, 420, 421, 422, 423, 424, 425, 426, 427, 428, 429, 430, 431, 432, 433, 434, 435, 436, 437, 438, 439, 440, 441, 442, 443, 444, 445, 446, 447, 448, 449, 450, 451, 452, 453, 454, 455, 456, 457, 458, 459, 460, 461, 462, 463, 464, 465, 466, 467, 468, 469, 470, 471, 472, 473, 474, 475, 476, 477, 478, 479, 480, 481, 482, 483, 484, 485, 486, 487, 488, 489, 490, 491, 492, 493, 494, 495, 496, 497, 498, 499, 500, 501, 502, 503, 504, 505, 506, 507, 508, 509, 510, 511, 512, 513, 514, 515, 516, 517, 518, 519, 520, 521, 522, 523, 524, 525, 526, 527, 528, 529, 530, 531, 532, 533, 534, 535, 536, 537, 538, 539, 540, 541, 542, 543, 544, 545, 546, 547, 548, 549, 550, 551, 552, 553, 554, 555, 556, 557, 558, 559, 560, 561, 562, 563, 564, 565, 566, 567, 568, 569, 570, 571, 572, 573, 574, 575, 576, 577, 578, 579, 580, 581, 582, 583, 584, 585, 586, 587, 588, 589, 590, 591, 592, 593, 594, 595, 596, 597, 598, 599, 600, 601, 602, 603, 604, 605, 606, 607, 608, 609, 610, 611, 612, 613, 614, 615, 616, 617, 618, 619, 620, 621, 622, 623, 624, 625, 626, 627, 628, 629, 630, 631, 632, 633, 634, 635, 636, 637, 638, 639, 640, 641, 642, 643, 644, 645, 646, 647, 648, 649, 650, 651, 652, 653, 654, 655, 656, 657, 658, 659, 660, 661, 662, 663, 664, 665, 666, 667, 668, 669, 670, 671, 672, 673, 674, 675, 676, 677, 678, 679, 680, 681, 682, 683, 684, 685, 686, 687, 688, 689, 690, 691, 692, 693, 694, 695, 696, 697, 698, 699, 700, 701, 702, 703, 704, 705, 706, 707, 708, 709, 710, 711, 712, 713, 714, 715, 716, 717, 718, 719, 720, 721, 722, 723, 724, 725, 726, 727, 728, 729, 730, 731, 732, 733, 734, 735, 736, 737, 738, 739, 740, 741, 742, 743, 744, 745, 746, 747, 748, 749, 750, 751, 752, 753, 754, 755, 756, 757, 758, 759, 760, 761, 762, 763, 764, 765, 766, 767, 768, 769, 770, 771, 772, 773, 774, 775, 776, 777, 778, 779, 780, 781, 782, 783, 784, 785, 786, 787, 788, 789, 790, 791, 792, 793, 794, 795, 796, 797, 798, 799, 800, 801, 802, 803, 804, 805, 806, 807, 808, 809, 810, 811, 812, 813, 814, 815, 816, 817, 818, 819, 820, 821, 822, 823, 824, 825, 826, 827, 828, 829, 830, 831, 832, 833, 834, 835, 836, 837, 838, 839, 840, 841, 842, 843, 844, 845, 846, 847, 848, 849, 850, 851, 852, 853, 854, 855, 856, 857, 858, 859, 860, 861, 862, 863, 864, 865, 866, 867, 868, 869, 870, 871, 872, 873, 874, 875, 876, 877, 878, 879, 880, 881, 882, 883, 884, 885, 886, 887, 888, 889, 890, 891, 892, 893, 894, 895, 896, 897, 898, 899, 900, 901, 902, 903, 904, 905, 906, 907, 908, 909, 910, 911, 912, 913, 914, 915, 916, 917, 918, 919, 920, 921, 922, 923, 924, 925, 926, 927, 928, 929, 930, 931, 932, 933, 934, 935, 936, 937, 938, 939, 940, 941, 942, 943, 944, 945, 946, 947, 948, 949, 950, 951, 952, 953, 954, 955, 956, 957, 958, 959, 960, 961, 962, 963, 964, 965, 966, 967, 968, 969, 970, 971, 972, 973, 974, 975, 976, 977, 978, 979, 980, 981, 982, 983, 984, 985, 986, 987, 988, 989, 990, 991, 992, 993, 994, 995, 996, 997, 998, 999, 1000

1. Structure #18 (CR), Kirsten's Korner, Downtown Florence  
Historic District
2. Lauderdale County
3. Gene A. Ford
4. August 26, 1994
5. Division of Archaeology, 13075 Moundville Archaeological  
Park, Moundville, Alabama 35474
6. North looking South
7. 21



1. Structures # 14 (CR) through # 18 (CR), Downtown  
Florence Historic District
2. Lauderdale County, Alabama
3. Gene A. Ford
4. August 26, 1994
5. Division of Archaeology, 13075 Moundville Archaeological  
Park, Moundville, Alabama 35474
6. Northwest looking Southeast
7. 22



1. Structures #18 (CR) and #19 (CR), City Shoe Shop  
Downtown Florence Historic District
2. Lauderdale County, Alabama
3. Gene A. Ford
4. August 26, 1994
5. Division of Archaeology, 13075 Moundville Archaeological Park  
Moundville, Alabama 35474
6. Northeast looking Southwest
7. 23



1. Structures # 19(CR) through #14(CR) Downtown Florence  
Historic District
2. Lauderdale County, Alabama
3. Gene A. Ford
4. August 26, 1994
5. Division of Archaeology, 13075 Moundville Archaeological Park  
Moundville, Alabama 35474
6. Northeast looking Southwest
7. 24





1. Structures - #5 (CR), #6 (CR), #14 (CR) through #17 (CR) and #19 (CR) Downtown Florence Historic District
2. Lauderdale County, Alabama
3. Gene A. Ford
4. August 26, 1994
5. Division of Archaeology, 13075 Moundville Archaeological Park, Moundville, Alabama 35474
6. Southeast looking Northwest
7. 25



AAMCO TRANSMISSIONS

AAMCO

IND. OF. BUS. OF. ST. LOUIS MO.

1. Parking lot behind structures # 14(CR) through #19(CR)  
Downtown Florence Historic District
2. Lauderdale County, Alabama
3. Gene A. Ford
4. August 26, 1994
5. Division of Archaeology, 13075 Moundville Archaeological  
Park, Moundville, Alabama 35474
6. Northwest looking southeast
7. 26



1. Structures #14 (CR) through #19 (CR)  
Downtown Florence Historic District
2. Lauderdale County, Alabama
3. Gene A. Ford
4. August 26, 1994
5. Division of Archaeology, 13075 Moundville Archaeological Park  
Park, Moundville, Alabama 35474
6. Southeast looking Northwest
7. 27



WALKWAY

POSEY

1. Structures #14(CR) through #19(CR), Downtown Florence  
Historic District
2. Lauderdale County, Alabama
3. Gene A. Ford
4. August 26, 1994
5. Division of Archaeology, 13075 Moundville Archaeological Park,  
Moundville, Alabama 35474
6. South looking North
7. 28